

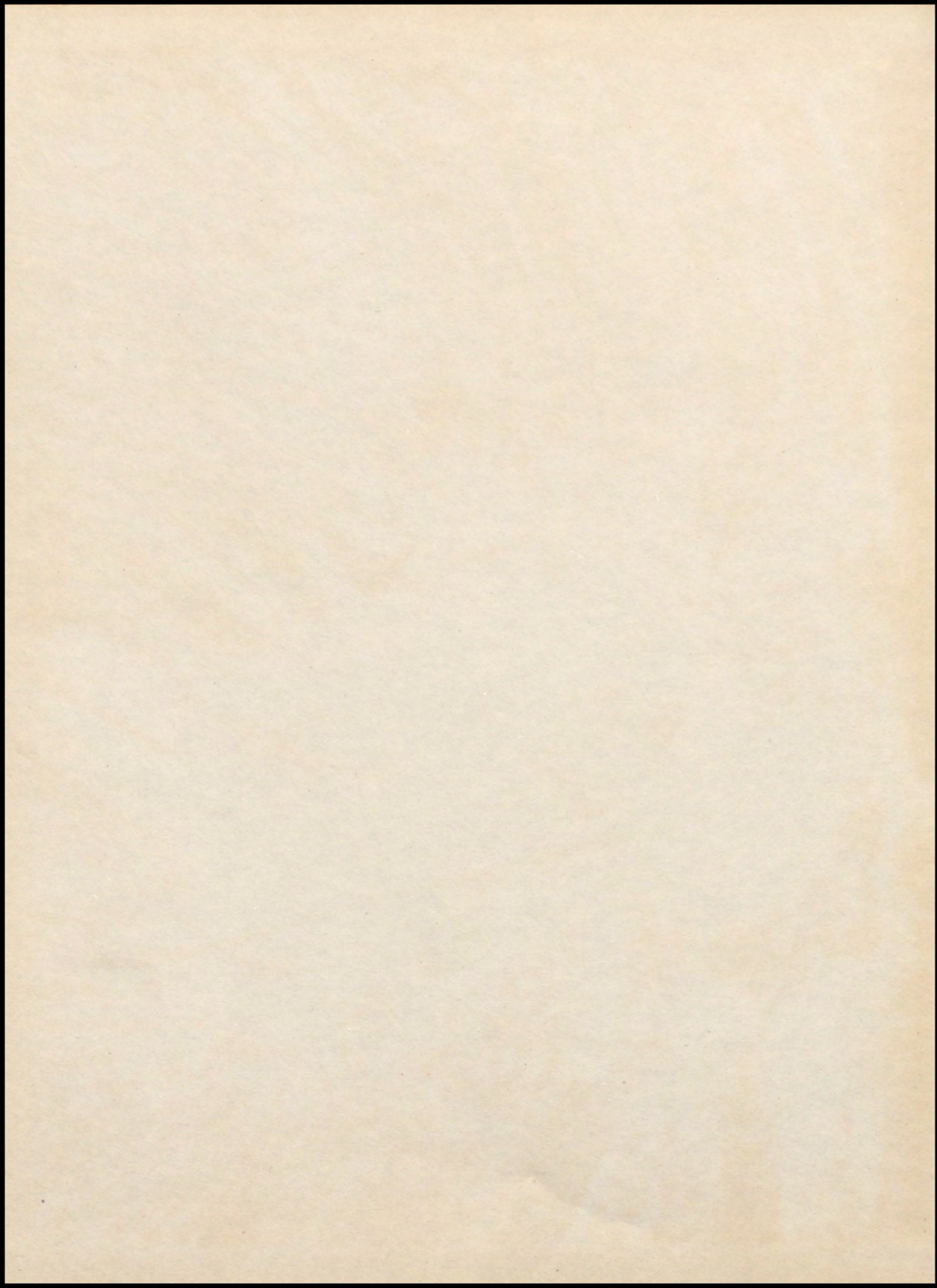
NINETEEN THIRTY NINE

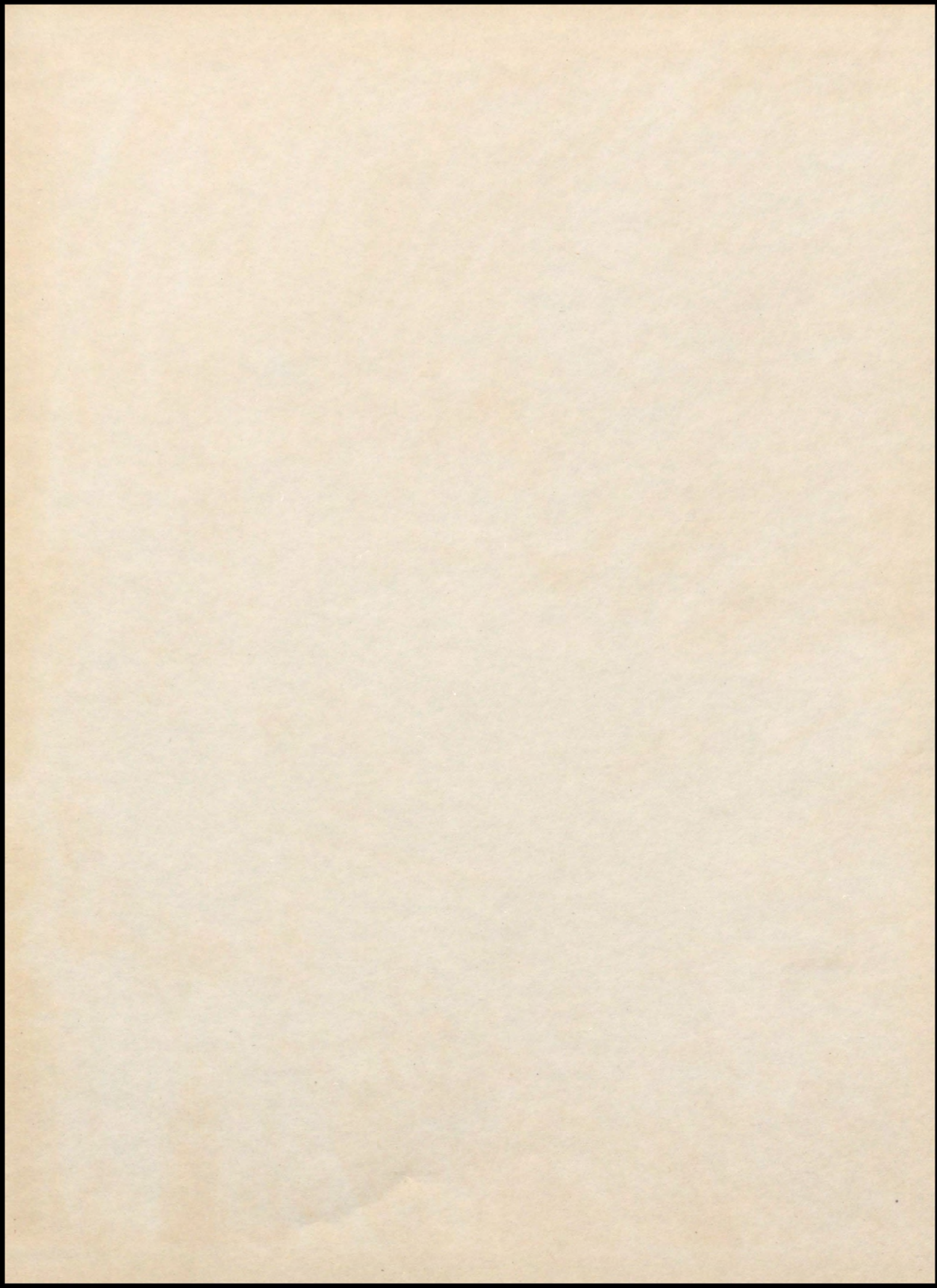


LEBANON LOG

THE UNIVERSITY OF CHICAGO PRESS











The
MOUNTAIN LOG

OF NINETEEN HUNDRED THIRTY-NINE

Published by the students of Mount Lebanon High

School at Mount Lebanon, Pittsburgh, Pennsylvania

volume ix

FOREWORD

TAKING OFF ON THE MAGIC CARPET, WE
ARE ABOUT TO BE TRANSPORTED TO THE
REALM OF MT. LEBANON HIGH SCHOOL
WHERE WE SHALL GET A PANORAMIC,
VIEW OF THE EXPERIENCES AND ACTIVI-
TIES OF THE SCHOOL YEAR 1938-39 ∴ ∴





ADMINISTRATION



CLASSES

CONTENTS

ACTIVITIES



ATHLETICS



FEATURES



D E D



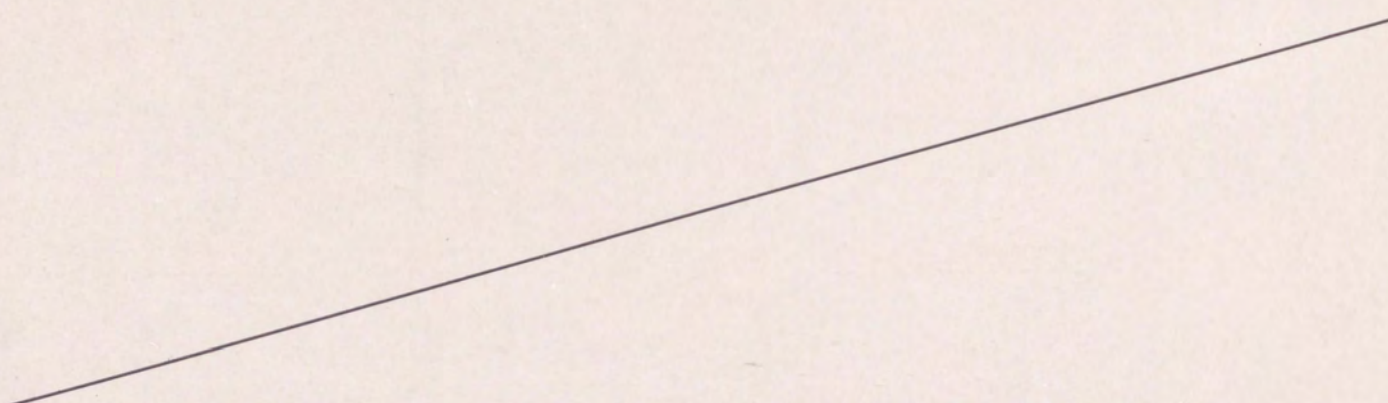
TO THE YOUTH OF '39, WHO IN THEIR SELF-RELIANCE AND
EAGERNESS SYMBOLIZE THE SPIRIT OF INDEPENDENCE AND
BOUNDLESS AMBITION OF OUR AMERICAN FOREFATHERS, WE
RESPECTFULLY DEDICATE THIS VOLUME. MAY THEIR COUR-

AGE TO OVERCOME OBSTACLES ENABLE THE YOUTH OF '39 TO

I C A T I O N

MAINTAIN THE FUNDAMENTALS OF LIBERTY AND FREEDOM

SO JEALOUSLY GUARDED BY OUR AMERICAN ANCESTORS.



"Magic Carpet leaving on Skyway '39 for Mt. Lebanon High School." Thus the shrill voice of the dispatcher reverberates throughout Memory Airport. Scurrying aboard the Magic Carpet, we zoom into the air and are soon whizzing along the bumpy road of school life. As we enter the hills of Lebanon, we encounter a scholarly group of people who, at first, cast apprehensive glances in our direction. Finding us quite harmless after investigation, they invite us to explore the realm over which they reign.



ADMINISTRATION

Superintendent



H. V. HERLINGER, *Superintendent*

It has been said, "Education is not apart from life—it is just the adult generation giving its own world to the new generation." In no community have its citizens made a greater effort to provide modern buildings, highly qualified personnel, and sufficient and appropriate materials than in Mt. Lebanon. The citizens of this community have been tireless and ceaseless in their efforts to provide for you, their

children, all that is best for your education. As a whole, you have availed yourselves of the opportunities provided to a very high degree, as the records of our graduates indicate. It is your obligation to your community to see to it that by your efforts and application these standards are raised still higher, so that those who have made your opportunities possible will feel the effort has been worth while.

H. V. Herlinger

Principals

A school *IS* the students who compose it. Its standards of scholarship, citizenship, sportsmanship, and honor are in fact at the level on which its members live. If you would have a school worthy of our pride, you must be pride-worthy members of it. Teachers and principals seek ever high standards, but the quality of a school is ultimately measured by the quality of its students. What is *YOUR* effect on the quality of *OUR* school?

L. E. Perry



L. E. PERRY, *Principal*



RALPH D. HORSMAN, *Acting Principal*

"Youth looks forward—age looks backward." This truism is amply borne out by experience. Each looks to that which holds the most for him.

Eagerness and the ambitious desire to achieve lead youth on in the quest for a place of distinction among their fellow-men. Each step achieved is one nearer some desired goal. Let each step be such that when age approaches and the view changes you may look back with satisfaction and pride.

In graduation a most important goal has been achieved and one that may be looked upon with satisfaction. Plan new goals for the future that they may fit well with the past.

Ralph D. Horsman

Faculty



English **



English ***



Foreign Language*



Foreign Languages **



English*

ENGLISH*

CAMPBELL, MARGARET, A.B.
SIMPSON, CLYDE W., A.B., M.A.
O'DONNELL, MAE, A.B.
LYTLE, LEILA, B.S.
GORDON, RUTH, A.B.
MOORE, MABEL, B.S., B.L.S.

ENGLISH**

HINDMAN, GERALDINE, B.S., M.A.
PICKENS, MARTHA, A.B., M.A.
HAY, JEAN, A.B., M.A.
STONER, KATHERAN, B.S., M.A.
SAXTON, KENNETH, A.B., M.Ed.

ENGLISH***

FROBESE, KATHERYN, A.B., M.Litt.
TAYLOR, MARGARET, A.B., M.Litt.
NEUMARKER, MARIE, A.B., M.Litt.
ALDSTADT, MARGARET, A.B.

FOREIGN LANGUAGE*

ROEGGE, RITA MARY, A.B.
FISHER, JAMES, A.B.
PATTERSON, C. ADA, A.B.
BULGER, MIRIAM, A.B., M.A.

FOREIGN LANGUAGE**

McCLURE, MARGERY, A.B., M.A.
HOLLIDAY, MARGARET, A.B., M.A.
ZAHNISER, HELEN, A.B., M.A.
BECK, MARGUERITE, A.B., M.A.

Faculty



Mathematics*

Mathematics**



MATHEMATICS*

SMITH, SARAH, A.B., M.Ed.
ION, ELLA, B.S., M.Ed.
RIGHTMIRE, ANNE, A.B., M.A.
STREAMS, CARL, A.B., M.A.

Mathematics ***



MATHEMATICS**

KRUGH, MARY LOUISE, A.B.
FISHER, MARY LOU, B.S.
FORD, FRED, B.S., M.A.
BROWN, CLARENCE, C., B.S.

MATHEMATICS***

KONVOLINKA, HAROLD, B.S., M.A.
LADERER, WILLIAM, B.Litt., M.A.
ATKINSON, A. M., B.S., M.A., Ph.D.
KEIFER, JOSEPH, B.S., M.A.

Science



SCIENCE

KEKILTY, EILEEN, B.S., M.S.
STAFFORD, ALFRED, B.S.,
GRIMES, JOHN, B.S., M.Ed.
SHANER, JAMES, B.S., M.A.

Faculty



Social Studies**



Social Studies*



Social Studies***

SOCIAL STUDIES*

JORDAN, MYRTLE
MAGUIRE, MINNIE
BROWN, WILLIAM, B.S.
MOLLENAUER, DONLEY, A.B.

SOCIAL STUDIES**

LEEPER, MILDRED, A.B., M.A.
PETERSON, DANA, A.B., M.Ed.
DOAK, VICTOR, A.B.
NIETZ, MARTHA, B.S.

SOCIAL STUDIES***

CALDWELL, ESTHER, A.B., M.A.
HOGG, KENNETH, B.S., M.Ed.
SCHADE, CHARLES, B.S.
SHULTZ, JOHN, A.B.



Commercial

COMMERCIAL

GROVE, DOROTHY, B.S.
WHINNIE, THELMA, B.S., M.A.
BURROWS, MERLE, B.S.
KERR, VIRGINIA, B.S.
McLAUGHLIN, FLORENCE, B.S., M.A.

Faculty



Practical Arts

PRACTICAL ARTS

ANDERSON, ROY, B.S.
MILLER, DOROTHY, A.B., M.A.
ROGERS, JOHN, B.S., M.Ed.
FISH, PAULINE, B.S., M.A.



Fine Arts

FINE ARTS

CRIBBS, MARJORIE, A.B.
MIESCHER, A. S., B.M., M.M.
YOAKAM, BARBARA JEANE, A.B.
HARLING, RUTH

PHYSICAL EDUCATION

MCDONALD, LOUISE, B.S., M.A.
ZECHEMAN, HELEN, B.S., R.N.
LUECHT, HENRY, B.S.
MARTIN, PAULINE, B.S., M.D.

Physical Education



CLERICAL

RENTON, ESTHER
MCKELVIE, NELLE
SMILEY, RAYMOND
BOYER, ALBERTA

Clerical



Brain Trusters



● *First Row*: Edna May Johnston, Jack Cargo, George Schriber, Warren Bernhard, Ward Duchene, Dave Boyd, Ed Hamilton, Harold Langstaff, Dave Young, Lucille Mohl, Theresa Nolte, Barbara McNary, Mary Meyer ● *Second Row*: Charles Seghers, Bill Stout, Howard Isham, Paul de Benedictis, Jack Rothman, Harry Murphy, Tom Shields, Dean Kroh, Bill Cross, Dick Horning, Jack Rice, Don Barrett, Alex Copetas, Murray Potts, Henry McCall, Virginia Raeder, Dot Kaessner, Mary Jeanne Barrett, Betty Wick, Evelyn Davison, Ramona Moore, Doris Phillips, Shirley Nelson. ● *Third Row*: John McCall, Bill Longstaff, Ed McEnteer, Mary Boyd, Charles Hugus, Gilmore Williams, Bob Clarke, Dick Wolfe, Bill Taylor, Dick Grant, Ray Robb, Bob Nickeson, Dorothea Barto, Virginia Wolf, Jean Prass, Audrey Hance, Marie Wetzels, Betty Whitfield, Ed Ryan, Eunice Smith, Bill Hall, Bill Shaffer, Charles Clarke.

Executive Board

"Good morning! Are you a new officer of a homeroom? Welcome to our Executive Board. Let me introduce some of our officers. Met the two Daves. Here's our president, David Boyd, and right behind him is Dave Young, our vice president. Oh! pardon me, fellows, I want to introduce Ward Duchene who is an important cog in the student-government machine." After these introductions we will watch the Executive Board swing into action and observe the part it takes in school activities.

Dave Boyd is about to call the meeting to order just as Ed Hamilton, his predecessor, would have done in the fall semester. (Ed's helpers last semester were Vice President Harold Langstaff, better known as Hap, and Dave Boyd who toiled as Secretary-Treasurer.)

That fellow giving a report on the status of the Ways and Means Finances is Don Gardiner who has succeeded Bill Cranston as chairman of that committee. When you want to purchase candy, pop, or weiners at the

football games, these are the people to whom you throw your coins. Oh, you've worked on the committee! Then you know what a job it is trying to pass pop to all those thirsty fans. Next comes the report of the Social Committee. Charlotte Schultz is discussing the social side of school life and the possibility of a dance in the very near future, which is her problem as the Committee Chairman. What was that statement made by Secretary Duchene about a new method of dismissal? I believe that motion was given by Dick Horning, the Traffic Chairman. You see, we must collect all the data on these discussions so that we shall be able to report all the new laws and amendments to our homeroom on Monday morning. We also have to get the dates of committee meetings for the members who are in our homerooms. You'll soon learn all your duties as a new homeroom president and I will expect to see you next week for a further study of the Student Federation of Mt. Lebanon.

Little Brain Trusters



● *First Row*: Ralph Coltman, Robert Nagel, Inger Arnesen, Elsie Arnesen, Nancy Charles, Lois Miller, Sally McFall, Margaret Auty, Bill Arther, Jane Ross, Patricia Baum, Betty Donges, Mary Waterhouse, Shirley Nelson, Ross Smith, Jim McPeak ● *Second Row*: Elmer Specht, David Woodworth, Bob MacLean, Douglas Anderson, Bill Fee, David Uline, David Kraft, Charles Mershon, Jay Arthur, Miss Aldstadt, George Smith, Robert Stoner, James Stone, Bob Tate, Bob Hall, Jack Sholl, Bob Keany ● *Third Row*: Donald Youngs, Don Linderman, Bill Perkins, George McCall, Richard Adamson, Robert Sisterson, Robert Blume, Hubert Hanks, David Finn, Bob Meneilly, Jim Miller, Bill Barr, Dick Russon, Walter Huhn, Bill Lascheid, Howard Bower.

Student Council

If you visit Room One during a club period, you might be accosted by a bombardment of words as members ask questions, offer suggestions, and argue in favor of their ideas, while the President endeavors to maintain a parliamentary procedure. Miss Aldstadt, this year's new faculty sponsor, acts as the Court of Last Resort and as a restraining influence upon the earnest and frequently over-enthusiastic representatives.

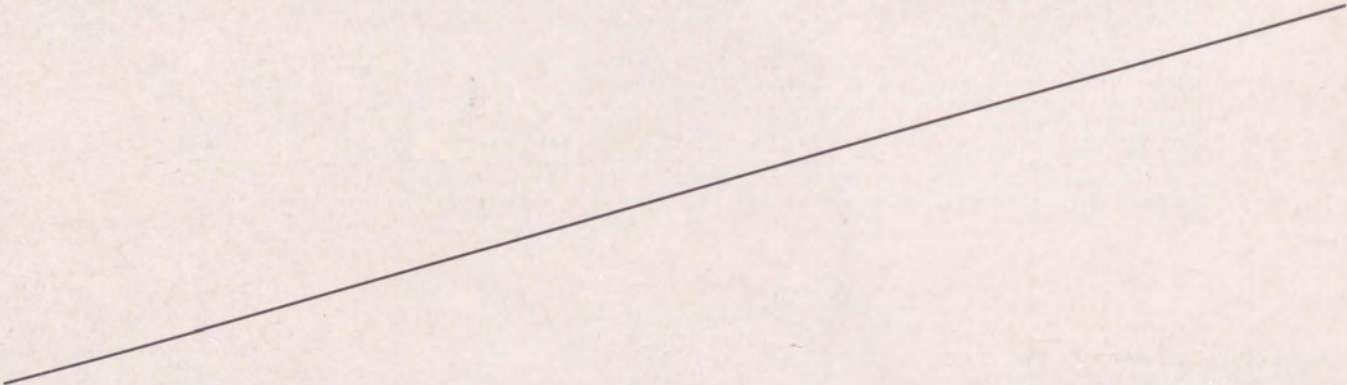
The Council, composed of the various home room presidents and officers elected by the entire student body, not only has charge of the usual Junior High governmental affairs, but also sponsors a social program. This year's activities included a series of tea dances, a party for each grade, and an extra one for Ninth Grade. Charging only ten cents admission, the Council cleared sufficient money

to meet all expenses and leave a sum to help support the Activities Banquet.

Undertaking a special project with the cooperation of Senior High, the Council sponsored a "Buy a Bulb" campaign to beautify the school grounds.

Comparable to the Activities Key of the Executive Board are the honor letters or monograms, presented to the students earning the required number of points. Acting as an incentive to pupils, the letters help students realize more fully the advantages and importance of school activities.

This form of student government is similar to that of our local, state, and national legislature as it is democratic in form and helps to prepare the student to take his place in the political world after graduation.



Brimming with curiosity, we penetrate further into the most populous region of this land where, after disembarking from the *Magic Carpet*, we tangle with the masses. After scrutinizing their faces, we must needs remark about the handsome youths and lovely ladies! Some are sunk in the oblivion of study, while others are engaged in the more leisurely pastime of jest and banter. We espy one fellow sporting a striped blazer shirt, whose dazzling colors stun us for the moment. Recovering from the shock, however, we next behold Suzy Q flopping along in her saddle shoes.



C L A S S E S

D. - dead as of 1979 reunion
 x - attended reunion



WILLIAM ABRIATIS
 August
 Soccer, Clubs.

JOAN ADAMS x
 June
 Glee Club, Operetta, Traffic,
 Home Room Officer. *Michigan*



HOWARD ALDERSON
 June
 Track, Decorating, Traffic,
 Usher Squad, Hi-Y, Clubs.
Florida

EDWARD ALLEE
 June
 Wrestling, Class Play, Intra-
 mural Basketball, Clubs.
Camp Hill



HOMER AMICK x
 June
 Clubs. *15102*

MARY H. ANDERSON
 June
 Girl Reserves. *California*



ROMAINE ANDREWS
 June
 Basketball, Traffic, Home
 Room Officer, Hi-Y, Clubs.
19002 Maple Glen

MARIAN AREHART
 January
 Clubs. *Florida*



ANNE AUGENSTEIN x
 January
 Traffic, Class Play Committee,
 Clubs, G. A. A.
Bethel Park

JANET AUGENSTEIN D
 June
 Handbook Committee, Clubs.



RUTH BAKER D
 June
 Traffic, Honor Roll, Clubs.

PHYLLIS BALCH
 June
 Class Play, Traffic, Operetta
 Committee, Girl Reserves,
 Clubs.



MARGARET BALLARD X
January
Clubs. (Granny Brine)
15241

RUTH BARKER X
June
Traffic, Honor Roll, G. A. A.,
Clubs. Florida

DONALD BARRETT X
June
Traffic, Log, Home Room Of-
ficer, National Honor Society,
Honor Roll, Hi-Y.
Crown P.D., Ind.

MARY JEANNE BARRETT X
June
Glee Club, Operetta, Library,
Home Room Officer, Honor
Roll, Activities Award.
10227

BURNETTE BARTEAUX
June
Library.

CHRISTIAN BAUER
January
Band, Orchestra, Class Play,
Operetta, Home Room Officer,
Clubs. Lancaster, Pa.

BETTY BEAM
June
Class Play Committee, Girl
Reserves, Clubs, G. A. A.

FRANK BEATTY D
January
Class Play Committee, Home
Room Officer, Clubs.

CHARLES BECRAFT D
June
Class Play, Operetta, Traffic,
Cafeteria, Usher Squad.

BEN BENSON
June
"B" Squad Football, Golf,
Clubs, Intramural Basketball.

WILLIAM BERGMANN
June
Wrestling, Cafeteria, Home
Room Officer, Hi-Y, Clubs,
Intramural Basketball.
California

WARREN BERNHARD X
January
Football, Basketball, Traffic,
Class Play Committee, Home
Room Officer, Clubs.
Dallas, Texas.





RICHARD BERND
January
Football, Band, Orchestra,
Cafeteria, Public Address,
Class Play Committee.

CARL BETZ
June
Fencing Team, Clubs. *D*



BARBARA BINDER *D*
January
Traffic, Class Play Committee,
Library, Girl Reserves.

CAROLINE BLAIR
June
Girl Reserves, Clubs, G. A. A.,
Hostess Squad, Class Play
Committee.

*Life of
Dr. Eldstrom
gh. 15243*



JACK BOWLUS *D*
June
Class Play, Traffic, Honor
Roll, Clubs, Intramural Bas-
ketball.

DAVID BOYD *X*
June
Football, Wrestling, Traffic,
Executive Board Officer,
Home Room Officer, Activities
Award.
Michigan, Mich.



FLORENCE BRENKUS *X*
January
Traffic, Class Play Committee,
G. A. A., Clubs.
Florida

BERT BROOKS *D*
June
Football Manager, Track,
Cafeteria, Home Room Officer.
Human Service - letter Feb. 1941



ELSMA ORRIN BROOKS
January
Football, Tennis, Class Play
Committee, Operetta Commit-
tee, Clubs.
Westmont, Ill.

HARRY BURKHART
June
Usher Squad, Log, Home
Room Officer, Clubs, Intra-
mural Basketball.



ESTHER BURNS *X*
June
Operetta Committee, Home
Room Officer, Honor Roll,
Clubs.
15220

TED BURTIS *X*
June
Class Play, Traffic, Usher
Squad, National Honor So-
ciety, Honor Roll, Hi-Y.
*Ch. & Pres. of Sun Oil
Villanova, Pa.*

Pres. Sun Oil



ELLEN R. CAMPBELL X
June

Chorus, Class Play, Ways and Means, Library, Log, Home Room Officer.

Galesburg, Ill.

GRACE CAMPBELL X
January

Class Play, Clubs.

Bethel Park

MARY ELLA CAMPBELL X
January *Drake*

Chorus, Glee Club, Operetta, Class Play Committee, Honor Roll, Girl Reserves.

15228

WILLIAM CAMPBELL X
January

Football, Basketball, Publicity, Lantern, Log, National Honor Society.

*Married
Kitty Lou Doughton
Morrison Dr., 15216*

SADIE R. CAPONE
June

Class Play, Honor Roll, Girl Reserves, Clubs.

JACK CARGO
January

Class Play, Traffic, Usher Squad, Home Room Officer, Hi-Y, Junior Academy of Science.

Ambley, Pa.

ANNE REED CHARTERS
June

Class Play, Traffic, Attendance, Honor Award Committee, G. A. A. Council.

Burnsville, Minn.

GEORGE CHURCHILL X
June

Wrestling, Track, Home Room Officer, Honor Roll, Clubs.

Alexandria, Va.

PORTIA MORROW CLARK X
January

Class Play Committee.

N. Y.

VIRGINIA CLARK
June

Traffic, Operetta Committee, Library, Home Room Officer, Honor Roll, Clubs.

Moraga, Cal.

LOIS VIRGINIA CLOSE X
June

Hostess Squad, Attendance, Operetta Committee, Clubs.

Va. Beach

NATALIE COLE
June

Operetta, Glee Club, Hostess Squad.





PATRICIA COLGATE
June
Glee Club, Operetta, Traffic,
Ways and Means, Lantern.
Ridgewood, N.Y.

JANET COLLINS X
June
Attendance, G. A. A., Clubs.
Woodland Hills, California



DORIS CONE X
June
Operetta, Hostess Squad,
Traffic, Ways and Means, Log,
Girl Reserves. *(Richard McQuinn) 15243*

MARILYN COOK
June
Clubs, Honor Roll.
Pinehurst, N.C.



JANICE COOPER X
June
Class Play, Traffic, Attend-
ance, Ways and Means, Li-
brary, Activities Award.
Van Nuys, Ca.

WILLIAM M. CRANSTON
January
"B" Squad Football, Traffic,
Ways and Means, Home
Room Officer, Honor Roll,
Hi-Y.
Poughkeepsie, N.Y.



DONALD CREED D
June
"B" Squad Football, Chorus,
Glee Club, Operetta, Home
Room Officer, Hi-Y.

WILLIAM R. CROSS, II
June
Track, Class Play, Traffic,
Decorating Squad, Log, Home
Room Officer.
Houston, Texas



ANNE ELIZABETH CURL X
June
Clubs.
McMurray

CHARLES DALGLEISH D
January
"B" Squad Football, Basket-
ball, Cafeteria, Class Play,
Publicity, Clubs.



EDWARD DAPPER
June
Wrestling, Traffic, Home
Room Officer, Hi-Y, Clubs,
Intramural Basketball.
Martin Ave. 15216

VIRGINIA DAVIS X
Transferred
*Dell Ave.
15216*



HAROLD DAVISON
January

"B" Squad Football, Poster
Squad, Class Play Committee,
Clubs.
15235

JIM DAWES
June

Rifle Team, Traffic, Home
Room Officer, Intramural Bas-
ketball.

JEAN AUDREY DAWSON
January

Chorus, Glee Club, Operetta,
Class Play Committee, Honor
Roll. *Mariad Park
Livingston - 1942
Allison Park.*

MARY ALICE DEE
June

Traffic, Attendance, Class Play
Committee, G. A. A. Council,
Library, Home Room Officer.
Portland, O.

ANNETTA J. DEGELMAN X
June

Band, Hostess Squad, Activ-
ities Banquet, G. A. A., Clubs.
Richory, Pa.

KENNETH DEJOHN X
June

Traffic, Usher Squad, Clubs.
Sharon, Pa.

EMILY DELACH D
June

Honor Roll, Girl Reserves,
Clubs.

HAGER DE LONG
June

Tennis, Traffic, Class Play
Committee, Operetta Commit-
tee, Clubs. *Mariad
Mary Bradester
Austin Ave.
15243*

ROY DE LONGA
June

Football, Intramural Basket-
ball, Soccer, Traffic, Clubs.
*Retired from Air
Force, Universal
City, Texas*

PATRICIA DENHART X
June

Traffic, Operetta, Library, Girl
Reserves, Clubs.
15228

BARBARA A. DEVORE X
June

Class Play, Operetta Commit-
tee, Clubs.
Cranford, N. J.

BETTY JANE DIETRICH
June

Traffic, Class Play Committee,
Home Room Officer, Honor
Roll, Girl Reserves, Clubs.





DORIS MENDER DISNEY X
January

Class Play, Bulletin Board,
Activities Banquet, Lantern,
Log, Home Room Officer.

(Jim Kramer)
15-2-28.

PAUL DITTNER
August

Clubs.

East Lyme, Conn.



JOE DONAHOE X
June

Football, Basketball, Track,
Class Play, Lantern, Log,
Clubs.

Cincinnati

CYRIL DONOGHUE X
June

Fencing Team, Decorating
Squad, Hi-Y.

7 children

15228



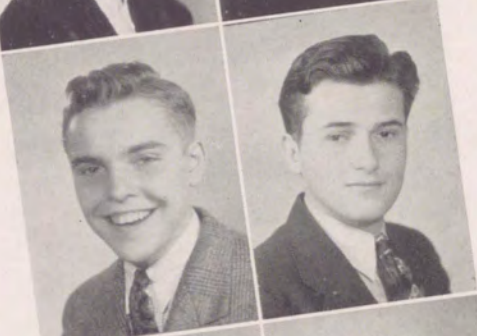
FRANCES DOTTEN
June

Clubs.

NINA DRAKE X
June

Class Play, Clubs.

Cuyahoga Falls, O.



WARD DUCHENE
June

Basketball, Traffic, Activities
Banquet, Executive Board Of-
ficer, Home Room Officer,
Honor Roll.

Allison Park

JOHN DUDT D
January

Class Play Committee, Clubs.



BETTY JANE DYSON X
June

Chorus, Operetta, Home Room
Officer, Clubs.

Palatine, Ill.

FRANK ELK D
January

"B" Squad Football, Band,
Traffic, Home Room Officer,
Clubs.



NORMAN ELLIOTT D
June

Wrestling, Track, Home Room
Officer, Hi-Y, Clubs, Intra-
mural Basketball.

BETTY MAE ERENRICH
June

Traffic, Lost and Found Squad,
Lantern.

Miami Beach



EDITH ERICKSON X
June

Traffic, G.A.A. Council, Clubs.
Freidens, Pa.

JUNE EVA X
June

Traffic, Girl Reserves, Clubs,
G. A. A.
Sthaca, N. Y.

BETTY EVANS X
June

Traffic, Girl Reserves, Clubs.

WILLIAM FALK X
January

Usher Squad, Class Play Committee, Clubs.
15236

VALENTEEN FELICETTI
January

Chorus, Class Play Committee,
G. A. A., Clubs.
15234

LEE FERRELL
June

Football, Usher Squad, Hi-Y,
Clubs, Intramural Basketball.
Fremont, Cal.

MARY LOU FINDLEY
June

Class Play, Operetta Committee, Home Room Officer, Honor Roll, Clubs.

Sands Point, N. Y.

KARL FISCHER D
January

Rifle Team, Class Play Committee, Home Room Officer, Clubs.

RUTH FISCHER
June

Class Play, Traffic, Log, Honor Roll, Clubs.

Ann Arbor

VIRGINIA FISHER
June

Clubs
*Panama City
Florida*

FRANK FITCH
June

Traffic, Cafeteria, Honor Roll, Clubs.

Wychoff, N. J.

WILMA FLEET X
June

Clubs, G. A. A.

Bethel Park





ELIZABETH FORD (Shady)
June
Traffic, Girl Reserves, Clubs.
Shady Dr. &

DOROTHY GAITE X
June
Chorus, Glee Club, Traffic,
Operetta, Honor Roll.
Houston, Texas



DONALD GARDINER
June
Decorating Squad, Traffic,
Ways and Means Chairman,
Hi-Y.
Bethel Park

BRUCE GARDNER
June
Intramural Basketball, Hi-Y.
Clubs.
Bethel Park



SARA GEHRETT
June
Ways and Means, Class Play,
Traffic, G. A. A., Girl Reserves.
Oakmont

PAUL GETTY X
January
Football, Wrestling, Track,
Class Play, Clubs.
Mc Murray



JANET GILES X
January
Glee Club, Operetta, Attend-
ance, Ways and Means, Class
Play Committee, Girl Reserves.
Strasburg, Pa.

ELIZABETH GOEHRING (Kudam)
June
Band, Traffic, Clubs.
15206



JAMES GOLDAINE
January
Band, Glee Club, Operetta,
Decorating Squad, Class Play
Committee, Clubs.
15216

JOHN GOLDTHWAIT
January
Traffic, Honor Award, Public-
ity, Lantern, Activities Award,
Hi-Y.
Plattsburg, N. Y.



JANET GOODING
June
Chorus, Traffic, G.A.A., Clubs.
Washington, D.C.

BETSY W. GORHAM D
June
Clubs.



WILLIAM GOTTSCHALK X
 June
 Traffic, Usher Squad, Operetta
 Committee, Clubs.
Morrison Drive
15216

CHARLES GRAHAM
 June
 Traffic, Honor Roll.
15241

JOSEPH GREGG
 August

DOROTHY GROSE
 June
 Handbook Committee, Li-
 brary, Log, Honor Roll, Clubs.
Farmington, Conn.

EUGENE GROSSO X
 June
 Wrestling, Usher Squad,
 Clubs.
15243

GERTRUDE HAGERTY X
 June
 Traffic, Clubs.
Downers Grove, Ill.

MARJORIE HALL D
 June
 Cheerleader, Chorus, Class
 Play, Operetta, Honor Roll.

GRACE HALLER X
 June
 Traffic, Operetta Committee,
 Home Room Officer, Honor
 Roll, Girl Reserves, Clubs.
15243

EDWIN HAMILTON D
 January
 Football, Basketball, Track,
 Lantern, Executive Board Of-
 ficer, Merit Parade.

ROBERT T. HANCE
 June
 Fencing Team, Traffic, Log,
 Clubs.

MARY M. HARDESTER
 January
 Class Play Committee, Oper-
 etta Committee, Home Room
 Officer.
Married Drager
DeLong.
15243

ALBERT HARRIS D
 January
 Clubs. *Killed*
in auto accident
1939.





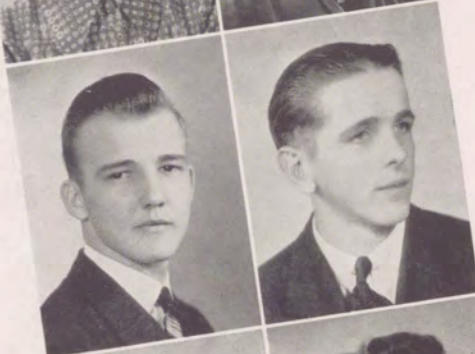
MARY RITA HARRIS
Transferred
15241

ESTHER G. HARRISON X
June
Traffic, Log, Home Room Of-
ficer, Honor Roll, Girl Re-
serves, Clubs.
Springdale, Pa.



JEAN HARST
June
Home Room Officer, Girl Re-
serves, G. A. A., Clubs.
15202

KITTY LOU HAUGHTON X
June
Honor Roll, Clubs.
Married Bill Campbell.
15216



GLENN HECK
June
Wrestling, Track, Home Room
Officer, National Honor So-
ciety, Honor Roll, Activities
Award.
Glenn Mills, Pa.

HENRY HEPNER X
June
Clubs.
15227



JENNIE LEE HEPNER
January
Class Play Committee, Clubs.
Sectia, N. J.

SHIRLEY HESS
June
Cheerleader, Operetta Com-
mittee, Home Room Officer,
Clubs.
15236



BARBARA HESSE
June
Chorus, Glee Club, Operetta,
Traffic, Bulletin Board Com-
mittee, Honor Roll.

DANIEL HILF X
January
Traffic, Class Play Committee,
Home Room Officer, Hi-Y,
Clubs.
*Whitfish Bay,
Wis.*



CHARLES H. HOFFMAN
January
Band, Orchestra, Class Play.
Conneaut Lake, Pa.

MARGARET HOFRICHTER
June
Clubs.
Bridgesville



MILDRED HOFRICHTER *X*
June
G. A. A., Clubs.

15228

OLIVE MAY HOLTZ
June
Hostess, Traffic, Publicity,
Lantern, Honor Roll.

N.Y.

JAMES HOOKER *X*
June

Track, Golf, Traffic, Class
Play Committee, Operetta
Committee, Hi-Y.

Married Lois Woodburn
15236

HELEN HOPPER *X*
Transferred

*Married Mark
Gathman.*

Bethel Park.

RICHARD HORNING
June

Football Manager, Glee Club,
Class Play, Traffic, Chairman,
Home Room Officer, National
Honor Society.

Oakland, Cal.

BETTY HOSICK *D*
June

Home Room Officer, Clubs,
Girl Reserves.

JEANNE MARIE HUBLER *X*
June

Class Play, G. A. A., Clubs.

Birgettstown

MARY ANN HUNTER *X*
June

Attendance, Log, Honor Roll,
Class Play.

Washington, D.C.

JOHN HURFORD
June

Traffic, National Honor So-
ciety, Honor Roll, Home Room
Officer, Clubs.

Littleton, Colorado

SHIRLEY HUTCHISON *X*
June

Class Play, Attendance, Log,
Home Room Officer, Clubs.

*Beverly Hills
Cal.*

WILBERT HUTCHISON
Transferred

Washington, Pa.

HOWARD ISHAM *D*
June

Home Room Officer.





JEANNE IVORY X
June

Cheerleader, Class Play, Oper-
etta, Traffic, Home Room Of-
ficer, Clubs.

*Magnid
Farkshulda 8 children
15241*

HELEN GRANT JOHNS X
June

Attendance, G. A. A., Clubs.

*Magnid Farkshulda
1941
Allison Park*

FRANCES JOYCE
January

Class Play Committee, G.A.A.,
Girl Reserves.

Covina, Cal.



EDNA MAY JOHNSTON X
January

Class Play, Scholastic Com-
mittee, National Honor So-
ciety, Honor Roll, Activities
Award, Girl Reserves Presi-
dent.

*New Port Richey,
Florida*



JEAN JUERGENS
June

Operetta Committee, Girl Re-
serves, Clubs.

DOROTHY KAESNER X
June

National Honor Society, Ac-
tivities Key and Guard, Lan-
tern, Log Literary Editor,
Honor Roll, Home Room Offi-
cer.

15228



WILLIAM KANE
June

Traffic, Clubs.

15216

*Died
1979*

MARJORIE KELLEY X
June
Clubs. *(Alvan O'Donne)
McDonald.*



GEORGE KEMMERER X
August

Clubs. *15216*

EVELYN KLEPPICK D
August

Clubs.



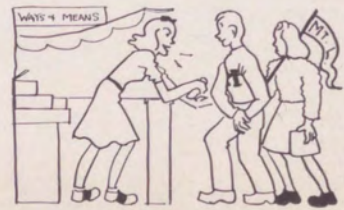
ROBERT KLIPPEL
June

Orchestra, Usher Squad, Clubs.

MARGARET KOHLMYER
June

Clubs.

McDonald



MT. LEBANON PUBLIC LIBRARY

DONALD KOONTZ
June

Tennis, Class Play, Cafeteria,
Usher Squad, Clubs.

JEAN E. KOUGH X
June

Glee Club, Operetta, Library,
Girl Reserves.

15238



HOMER KRABER
June

"B" Squad Football, Intra-
mural Basketball, Clubs.

15228

WILLIAM R. KRAMER X
January (Patty Mena)

Basketball, Golf, Class Play,
Home Room Officer, Clubs.

15241



FREDERIC LANG
January

Rifle Team, Class Play Com-
mittee, Hi-Y, Clubs.

15235

BEVERLEY LEWIS
June

Track Manager, Decorating
Squad, Traffic, Usher Squad,
Lantern, Home Room Officer.



LOIS LICHTENTHALER
June

Chorus, Operetta, Girl Re-
serves, Clubs.

Springfield, O.

JEANNE LINN
June

Ways and Means, Bulletin
Board, G. A. A. Council, Home
Room Officer, Girl Reserves,
Log. Married 1944.
Syracuse



WILLIAM LLOYD X
June

Traffic, Usher Squad, Log
Business Manager, Honor
Roll, Hi-Y, Class Play Com-
mittee.

15241

ELEANOR D. LOHNES X
June

Home Room Officer, Clubs.

Bethel Park



HAROLD LANGSTAFF X
January (Patty Mena)

Football, Wrestling, Log, Ex-
ecutive Board Officer, Honor
Roll, Principal's Trophy.

Sacramento, Cal.

MARTHA JANE LOSE X
June

Class Play, Operetta, Log,
Traffic, Home Room Officer,
Girl Reserves.

Married 1943.

Mrs. Manheimer (Jack's widow?)
15232



ANNETTE LOUGHBOROUGH
June

Traffic, Ways and Means.

*Marrried Jack Ray - 1940
Divorced - 1942*

CAROLYN LUNSFORD
June

Class Play, Home Room Officer, Clubs.

CHARLES LUSS
January

Class Play, Home Room Officer, Honor Roll.

Dryden, N.Y.

JOHN MANHEIMER
June

Chorus, Glee Club, Operetta, Traffic, Home Room Officer, Activities Award.

ROBERT MARMION
August

Football, Wrestling, Track, Clubs.

JOHN MARSHALL
June

"B" Squad Football, "B" Squad Basketball.

HENRY S. MASSICK
January

Traffic, Usher Squad, Class Play, Hi-Y, Clubs.

15243

ANGELINA MASTANDREA
June

Chorus, Clubs.

15234

HARRIETTE MAUMEE
January

Chorus, Attendance, Home Room Officer, Operetta Committee, Honor Roll, Clubs.

LOUIS MAY
June

Football, Wrestling, Intramural Basketball, Clubs.

15216

MARY JANE MAYLEBEN
June

Traffic, Attendance, Home Room Officer, Operetta Committee, Honor Roll, Clubs.

Carnegie.

HENRY McCALL
June

Basketball Manager, Track, Ways and Means, Home Room Officer, Honor Roll, Clubs.

West Palm Beach, Florida



ROBERT McCREADY
June
Class Play, Traffic, Ways and Means, Home Room Officer, Honor Roll, Clubs.

MARGARET C. McGAW
June
Chorus, Traffic, Library, Clubs.

EILEEN McGINNIS
June
Traffic, Log, Honor Roll, Clubs.

La Jolla, Cal.

GEORGE McGLAUGHLIN X
June
Track, Class Play, Public Address, Lantern, National Honor Society, Honor Roll.

Married Audrey Vance 15243

JAMES McGOVERN X
June
Clubs.

Manchester, Conn.

JOHN J. McGRATH D
June
Usher Squad, Home Room Officer, Clubs.

MARJORIE McKIBBEN X
June
Attendance, Home Room Officer, Clubs. *Married Chas. McMillen 1943.*

15243

ALICE McMASTER
June
Traffic, Ways and Means, G. A. A. Council, Clubs.

Tucson, Ariz.

WILLIAM McMINN X
June
Basketball, Track, Band, Class Play, Clubs.

15236

RICHARD McNALLY D
June
"B" Squad Basketball, Track, Clubs.

LAWRENCE McNAMARA D
June
Traffic, Operetta, Log, Home Room Officer, Clubs.

BARBARA McNARY
June
Traffic, Operetta Committee, Library, Home Room Officer, Honor Roll.





ANITA M. McQUILLEN
June
Chorus, Operetta, Traffic,
Class Play Committee, Honor
Roll, Clubs.
Washington, D.C.

KURT H. MEUSCHKE
January
Soccer, Band, Orchestra, Class
Play, Traffic, Honor Roll.
Carrick

LUCILLE ANAISE MOHL
June
Traffic, Attendance, Operetta
Committee, Home Room Of-
ficer, Clubs.
*8 children
Daytona Beach, Fl.*

HILBER MORGAN
June
Wrestling, Traffic, Class Play,
Honor Roll.
Cleveland Heights

HUGH MURPHY
June
Traffic, Hi-Y, Clubs.
15216

BETTY MYERS
Transferred
1

CLAIRE McSTEEN X
June
Cheerleader, Clubs.
*married Tony Valicenti
15241*

MARY MEYER
June
Band, Home Room Officer,
Girl Reserves, Clubs.
Santa Maria, Cal.

RAMONA MOORE X
June
Band, Orchestra, Class Play,
Executive Board, Home Room
Officer, Clubs.
*married Harold
Vitte
Freepoint, O*

JOHN MUIRHEAD X
Transferred
15224

MARY JANE MUTZ X
June
Operetta, G. A. A., Library.
*(Bob Kraus)
Ligonier*

JEANNETTE C. MYERS X
June
Attendance, G. A. A., Honor
Roll, Clubs.
*married 1945
15228*



LOUISE NICHOL *X*
June

Traffic, Lantern, Log, Home
Room Officer, National Hon-
or Society, Activities Award.
Maid 1942.

Indianapolis

WILLIS NOLLE *X*
June

Clubs.

Sibsonia

MARIE THERESA NOLTE
June *(Scherr)*

Traffic, Attendance, Operetta
Committee, Home Room Of-
ficer, Clubs.

*Hedgewood Dr.,
Grosse Pointe, M.*

JOHN W. O'BRIEN *X*
June *Scherr*

Tennis, Chorus, Glee Club,
Operetta, Ways and Means,
Hi-Y.

*Judge of Common
Pleas Court.*

15236

CHARLES O'BRIEN
June

Golf, Intramural Basketball,
Traffic, Home Room Officer,
Clubs.

MARY OCHSENHIRT
January

Traffic, Library, Log, National
Honor Society, Activities
Award, Junior Academy of
Science.

*Maid 1944.
Hedgewood, Mass.*

NANCY B. OSBOURNE
August

Chorus, Glee Club, Operetta,
Girl Reserves.

Maid 1944.

Lancaster, Texas

WILLIAM OXENREITER *X*
June *12 children*

"B" Squad Football, Intra-
mural Basketball, Track,
Usher Squad, Hi-Y, Clubs.

15216

MARY PACE
June

Clubs.

Bethel Park

PAUL E. PETERS *X*
June

"B" Squad Football, Clubs.

Monroe, Mich.

GUY PETERSON
June

Football, Track, Clubs.

MINNIE PETRICH
June

Clubs.

Houston, Texas





LOUISE PHILLIPS
June
Chorus, Class Play Committee,
Girl Reserves.
Malvern, Pa.

MARY LANE PLETCHER X
June
G. A. A., Clubs.
Paoli, Pa.



ROBERT POPP
January
Wrestling, Soccer, Class Play,
Poster Squad, Publicity, Log.
Manchester, N.H.

MURRAY POTTS
June
Football, Soccer, Wrestling,
Traffic, Honor Roll, National
Honor Society.
*American Embassy
Paris*



DOROTHY T. POWELL
January
Class Play Committee, Honor
Roll, Clubs.

SUSANN POWELL
June
Class Play, Ways and Means,
Operetta Committee, G. A. A.,
Honor Roll, Girl Reserves.



HUGH PRICE
June
Band, Cafeteria, Clubs.

BETTY JEAN PROCTOR
June
Chorus, Glee Club, Operetta,
Traffic, G. A. A., Home Room
Officer.
New Orleans



FRANCES PURPURA X
June
Clubs.
15216

NAOMI QUIGG X
June
Traffic, Attendance, Scholastic
Committee, Honor Roll, Clubs.
15241



J. ROBERT QUIGG D
June
Wrestling, Traffic, Clubs.

ROBERT QUILLIN
Transferred



VIRGINIA A. RAEDER X
June

Operetta Committee, Log,
Lantern, Home Room Officer,
Honor Roll, Activities Award.

15228

DONALD RAMSEY
June

Golf, Cafeteria, Usher Squad,
Operetta, Intramural Basket-
ball, Clubs.

ELEENE R. REARICK X
June

Cheerleader, Glee Club, Oper-
etta, Traffic, Ways and Means,
Girl Reserves.

15243

JAMES REDDY X
June

Rifle Team, Usher Squad,
Clubs.

15236

JACQUELINE REED
June

Girl Reserves, Clubs.

Paint Marion, Pa.

ROY REICHHOLD
Transferred

Milford, Delaware

DOROTHY L. REINHARD X
June

Orchestra, Log, Honor Roll,
G. A. A., Clubs.

Bethel Park

MARIE REITER X
June

G. A. A., Clubs.

15234

ELSIE RENKUS
January

Chorus, Class Play Committee,
G. A. A., Executive Board,
Home Room Officer, Clubs.

HENRY J. RENTON
Soccer, Traffic, Clubs.

15226

VIRGINIA RHYNER X
June

Hostess Squad, Bulletin Board
Squad, Clubs.

15234

ALICE RICE
January

Chorus, Publicity, Class Play
Committee, G. A. A., Clubs.

Lee, Mass.





JOHN RICE X
June

Basketball, Golf, Class Play,
Traffic, Home Room Officer,
Honor Roll.

Mariand
Ann Simpson
15241

STEPHEN RICE X
January

Band, Orchestra, Class Play
Committee, Clubs.

Bridgville



LOUISE RIDER X
June

Operetta, Girl Reserves, Clubs.

15220

THEODORE RIEGER
June

Soccer, Class Play Committee,
Clubs.

15234



RICHARD C. RITTER
June

Soccer, Traffic.

GENE ROBERTS
June

Clubs.



HARRIET ROHRKASTE X
June

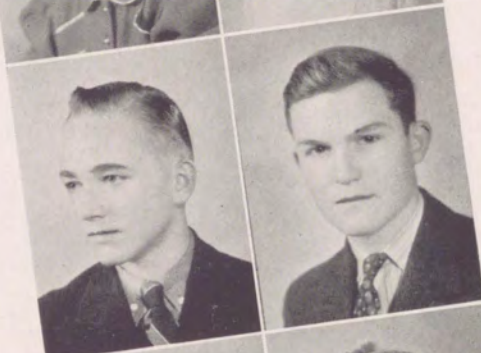
Traffic, G. A. A., Log, Clubs.

15241

ELIZABETH M. RONEY
January

Chorus, Class Play Committee,
Operetta Committee, Clubs.

Ormond Beach,
Florida



JAMES RYLAND
June

Intramural Basketball, Wres-
tling, Track, Home Room Of-
ficer, Hi-Y, Clubs.

FRED SANBORN
Transferred



SEPTA P. SANDERSON
January

Class Play, Honor Award, Li-
brary, Executive Board, Hon-
or Roll, Activities Award.

Mariand 1944
Epeter, N. H.

ESTHER SAPPLE X
June

Bulletin Board, G. A. A., Girl
Reserves, Clubs.

Venetia, Pa.



MARY RITA SCHEIDER
June
Clubs.

15243

JANE LOUISE SCHLOUGH
January

Glee Club, Operetta, Ways and Means, Traffic, Class Play Committee.

Waldwick, N.J.

GEORGE A. SCHRIBER
January

Wrestling, Class Play Committee, Home Room Officer, Clubs.

15216

CARL SCHUMANN, JR.
Transferred

Monrovia, Cal.

ELEANOR V. SCHWAGER
June

Traffic, Operetta Committee, Girl Reserves, G. A. A., Clubs.

JOHN SCHWEINSBERG
June

Hi-Y, Clubs.

Murder, Pa.

WILLIAM SCHWEITZER
June

Clubs.

MANUS SCOTT
June

Football, Track, Class Play, Home Room Officer.

Bethel Park

BETTY JANE SENIOR
June

Chorus, Library, Clubs.

PAUL JAMES SHANOR
June

Rifle Team, Decorating Squad, Traffic, Operetta Committee, Home Room Officer, Hi-Y.

married Ruth Gordy - 1942. West Africa

LOUIS SHAW
June

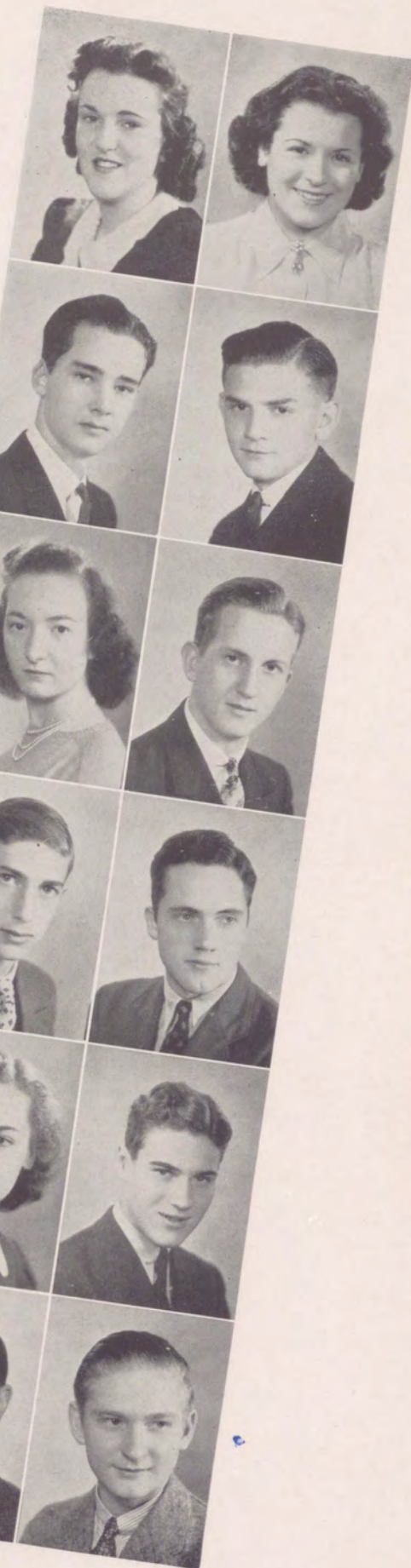
Band, Clubs.

D

EDWARD J. SHERRY
June

"B" Squad Football, Intramural Basketball, Traffic, Honor Roll, Junior Academy of Science.

Columbus, O.





RALPH SHIBLEY
June
Band, Orchestra, Chorus, Glee Club.

JACK EDWIN SHIELDS
June

Basketball, Track, Scholastic Committee, Home Room Officer, National Honor Society, Activities Award. *Married Jean Ivory & children.*
15241



GEORGE SIMMONS
June
Traffic, Cafeteria, Home Room Officer, Clubs.

GEORGE E. SIMMONS X
January

"B" Squad Football, Public Address, Junior Academy of Science.
15241



JAMES SLATTERY, JR. X
June

Hi-Y, Clubs, Soccer.
15205

PATSY SLONE
January

Clubs.



CHARLES A. SMITH X
June *6 children*
Intramural Basketball, Soccer.
Lancaster, Pa.

JOHN SOUTHWORTH D
June

Tennis, Clubs.



E. BEATRICE SPEAR
June

Clubs.

HELEN SPIRKA
January

Chorus, Publicity, Class Play Committee, G. A. A., Clubs.
Temple City, Cal.



JAMES SPRINGER X
June

"B" Squad Football, Intramural Basketball, Track, Wrestling, Clubs.
Reynoldsburg, O.

JOHN STEWART D
June

Football, Publicity, Operetta Committee, Lantern, Home Room Officer, Clubs.

Died in action in S. Pacific - Feb. 19, 1945.



LOIS M. STUCKEMAN *X*
June
 Traffic, Operetta Committee,
 G. A. A. Council, Library, Log,
 Girl Reserves.

15-228

HELEN SUMMER *X*
January
 Activities Banquet Committee,
 G. A. A., Home Room Officer,
 Clubs.

Los Altos, Cal.

ELIZABETH SUTTON
June
 Operetta Committee, G. A. A.,
 Clubs.

Washington, D. C.

JEANNE SWARTZ
June
 Honor Roll, Clubs.

Carlisle, Pa

ELSIE TENER
June
 Chorus, G. A. A., Clubs.

15241

DWAINE W. THOMAS
January
 Wrestling, Class Play Com-
 mittee, Clubs.

Seminole, Florida

BEVERLY MAE TILLITT
January
 Social Committee, Activities
 Banquet Committee, Class Play
 Committee, Clubs.

Clifton Park, N. Y.

GRACE TILLY *X*
June

15234

JOHN TURNBULL
June
 Home Room Officer, Clubs.

Canoga Park, Cal.

KATHLEEN URBEN
June
 Clubs.

DOROTHY VEGELER
January
 Traffic, Class Play Committee,
 G. A. A., Clubs.

WARREN VIETH *X*
June
 Football, Basketball, Track,
 Clubs.

Aurora, O.





BERYLE VINCENT
June

Chorus, Glee Club, Operetta,
Traffic, Log, Girl Reserves.

Melbourne, Florida

*Married Bill Smith
1942.*

HAROLD VITTE
January

Band, Orchestra, Traffic,
Cafeteria.

*Married Ramona Moore
Freeport, O.*



GLORIA VITTOR
June

Class Play Committee, Clubs.

Oakland, Cal.

(Bill Smith)

JOHN VOLLBRECHT
June

Clubs. *Coronado, Cal.*



MARY L. VOLMRICH
June

Clubs.

San Diego, Cal.

GEORGE W. WARWICK
June

Soccer Manager, Decorating
Squad, Usher Squad, Public
Address, Honor Roll, Clubs.



RUTH E. WATSON
January

Class Play, Honor Roll, Girl
Reserves, Clubs.

15235

MARJORIE WEATHERWAX
June

Social Committee, Ways and
Means, Class Play Committee,
Lantern, Log, Girl Reserves.

*Happinger Falls,
N.Y.*



ROBERT WEBER
January

Soccer, Cafeteria, Class Play
Committee, Hi-Y, Clubs.

15227

WILLIAM R. WEIMER
June

Bulletin Board, Clubs.



VIRGINIA WERNER
June

Class Play, Ways and Means,
G. A. A., Clubs.

MARIE WETZEL
June

Traffic, Home Room Officer,
Honor Roll, Girl Reserves,
G. A. A., Clubs.

Reading, Pa.



JANE WHEELER
June

Chorus, Glee Club, Operetta,
Traffic, Library, Girl Reserves,
Clubs.

ROBERT WHITELOCK X
June

Football, Basketball, Track,
Traffic, Social Committee, Ac-
tivities Award.

15228

LOUISE RUTH WILD X
January

Glee Club, Class Play, Traffic,
Lantern, Girl Reserves.

Somers, N. Y.

HARRY WILSON
June

Track, Honor Roll, Clubs.

NANCY WILSON
Transferred

15243

JAMES C. WINN
January

Football Manager, Tennis
Manager, Class Play Commit-
tee, Clubs.

Stamford, Conn.

RICHARD WOLF
June

Track, Home Room Officer,
Honor Roll.

LOIS MAE WOODBURN
June

Chorus, Operetta Committee
Chairman, Traffic, Attendance,
Ways and Means, Girl Re-
serves.

*Manned for
March 1944
15236*

JEAN WYRE
June

Traffic, Ways and Means,
Operetta Committee, Library,
Log, Girl Reserves.

15238

ANN YANKOSKY X
June

Hostess Squad, Clubs.

Indianola, Pa.



JAMES BARCLAY
June

JOHN BERNATH
January

ALBERT BUTCHER
August

JOHN ENGLISH
January

TRUXTON EVANS
August

ALEX GARAN *D*
January

HAROLD LANG *X*
June

Football, Soccer, Intramural
Basketball, Executive Board.

FRED LEEDHAM
June

CLIFFORD LOFLIN
August

ANNA RUTH MARTIN *X*
January

JOHN MASSOL
January

WILLIAM McROBERTS *D*
June

Clubs.

ARCH POWELL, JR. *D*
January

JOHN WALSH
June

Rifle, Hi-Y, Clubs.

Twelve B Grade



First Row: Jeanne Everhart, Lucille Vincent, Jeanne Green, Eileen Sebulske, Annette Loughborough, Margaret Martsolf, Jean Dobson, Lois Trageser, Janet Collins, Janet Buckingham, Gene Donelson, Ruth Templeton, Charlotte Schultz, Dorothy Neilson, Margaret Osbourne, Helen Hopper, Audrey Hance, Laura Robinette, Phyllis Schumm, Betty Lacy.

Second Row: Margie Kraber, Barbara Blair, Florence Orr, Louise Markle, Sophie Kazior, Eleanor Forbes, Betty Meyers, Ruth Means, Elspeth Jordan, Margie Morrison, Virginia Davis, Virginia Myers, Mary Lou Garner, Angelina Mastandrea, Margaret Say, Jean Charlton, Nancy Ufer, Mary Louis Haynes.

Third Row: Wilbert Hutchison, Paul Magnus, Henry Hepner, Harry Lammert, Dick Berger, Charles Courtney, Jesse Hill, Jim Brady, Eugene Matthews, Jack Rothman, Art Kiefer, Don Kramer, Charles Dixon, Mac Corner, Albert Eisenbeis, Jim Taylor, Paul de Benedictis, Karl Kreigline, Don Remensnyder, Jim Lane, Carl Schumann, Bob Davis, Norman MacDowell.

Fourth Row: Charles Erikson, Charles Purnell, Bob Nickeson, Frank Fitch, Dick Creps, Dave Young, Alex Copetas, Harold Bucher, Bill Amos, Art Adamson, Ray Smith, Charles Clarke, Al Butcher, Charles Miller, Harry Burkhardt, Bill Jackson, Don Richardson, Stanley Shepard, Jack McGovern, Bob Faloon.



Eleventh Grade



First Row: Lucille Lucchesi, Jean Post, Betty Wick, Joan Schroeder, Jane Sturman, Dorothy Vance, Elizabeth Abbott, Betty Shaffer, Shirley Massick, Mary Housley, Kathryn Bailey, Irene Maloney, Peggy Sack, Elaine Bullions, Betty Erisman, Gertrude Hutton, Betty Lee Scott, Dolores Luterancik, Kathleen Riffle, Ruth Conaway.

Second Row: Peggy Johns, Jane Bower, Marjorie Bechtel, Anna Herb, Evelyn Jones, Rosemary Purpura, Amelia Richardson, Ann Markey, Edith Smith, Doris Phillips, Phyllis Holloway, Rita Luxbacher, Ruth Renton, Ruth Stolze, Leona Schneider, Thirza Simmons, Helen Jane Hibbs, Mary Ann Hodtum, Joan Wyman, Helen Galenec, Margaret Rech, Edith Rickley, Marjorie Couch, Dorothy McKibbin, Marion Getty, Mary Jane Kenan.

Third Row: Betty Jane Samuels, Carolyn Maser, Ruth Jolly, Martha Harlan, Helene Schenck, Eleanor Kirsopp, Bernice Tracey, Mary Louise Knight, Emma Arbes, Jeanne Hast, Dorothy Keleher, Norma Whitehouse, Betty Suplee, Jean Ledwith, Dale Kirsopp, Geraldine McQuillen, Ethel Lorenz, Mary Ann Falk, Betty Shirk, Grace Judge, Patricia McClain, Nancy Morrison.

Fourth Row: Dorothea Rawa, Margaret Mellott, Dorothy Greiner, Jacqueline Young, Barbara Bridges, Betsy Ann Plank, Ruth Morgan, Audrey Phillips, Jean Moorhouse, Jean Dunn, Rosemary Stewart, Vera McColligan, Mary Louise Heimbuecher, Dorothy Rustad, Doris Smiley, Virginia Powell, Dorothy Campbell, Jesse Provost, Margaret Russell, Norma Baker, Dorothy Kachurik, Vera Davis, Marian Abdon, Beatrice Taylor, Mary Fitzgerald, Lucianne Isham, Jeanne Condit.

Fifth Row: Bob Hugus, Don Kallock, Fred Krugh, Dick Fuchs, John Usher, Charles Seghers, Thomas Vollbrecht, Grant Beach, Jack Donoghue, Joe Thompson, Jim Turner, David Stoner, Jim Kernan, Bill Duncan, Stanley Milewsky, Wayne Van Zandt, Carl Daube, Robert Halen, Walter Cavalovitch, Bill Kelly, Glenn Terry, Bernard Hobday.

Sixth Row: Larson Brown, Lawrence Williams, Bill Rogers, Bill O'Connor, John Shaffer, Ira Matheny, Jack Ballard, James Stewart, John Grimenstein, Dick Foster, Bill Clatty, Bill O'Brien, Robert Campbell, Jack May, Richard Pickett, Jerry Matthews, Ed Hutcheson, Bill Udischas, Fred Ulam, Jack Allderige.

Seventh Row: Bob Hanna, William Procter, Bill Reddy, Bill Shafer, Wesley Barthelmes, Ed Cipriano, Jack Stahlnecker, Chandler Keitchum, Ed Charnell, Warren Stuebing, Harry Murphy, Jesse Cullison, Richard Lapham, Jim Zook, Harry Benz, Jim Nichol, Rex Hammerly, Marion Cieslicki, Jack Shields, Roy Brahm.

Eighth Row: Lea McLean, Creighton Murphy, Tom Hooper, Dean Kroh, Bob Trueblood, John Brandt, Don Stechschulte, George Donahoe, Judson Prindle, Bill Smith, Tom Shields.





Eleventh Grade



First Row: Irene Shaffer, Anna Mae Balach, Alma Roehler, Margaret Nonic, Katherine Ziefel, Mary Elizabeth Mershon, Martha McFall, Mary Boyd, Pat Brady, Lois Kennedy, Marion Wright, Mary Alma Lapsley, Dorothy Myers, Patricia Colgate, Virginia Wolf, Nancy Sebring, Irene Brenkus, Grace Gebhardt, Patricia Brown, Ann Simmons.

Second Row: Helen Gaul, Mary Margaret Blum, Jean McCandless, Jean DeLong, Phoebe Vittor, Nancy Stanier, Nellie Caramela, Marie Ziefel, Mildred Volz, Dorothy Wetzel, Dorothy Ball, Dorothy Homer, Madeline Wheeler, Betty Schick, Betty Smith, Lillian Killinger, Mary Jean Anderson, Katherine Dowling, Louise Stabile, Phyllis Evans, Concetta Cipriano, Edith Smith, Rosemary Blum, Louise Campbell, Junetta Fidinger.

Third Row: Annie Lou Duncan, Jeanne Burke, Ann Simpson, Betty Wayman, Helen Feterman, Ruth Field, Lenore DeWall, Jane Roberts, Florence Yost, Jean Prass, Betty Campbell, Harriette Allen, Anna Moury, Grace Wild, Dorothy Stauff, Suzanne Crawford, Virginia Ballard, Miriam Wallgren, Peggy Lewis, Dorothea Seifert, Beverly Imrie, Annette Moses.

Fourth Row: Virginia Trunzo, Roberta Green, Vickie Carafas, Louise Hilf, Charles Hast, Mike Litwin, Bill Stout, Bill Sholl, Henry Powell, Bill Proctor, Joseph Haynes, Bill Hoffman, Bob McElroy, Wallace Coyte, Ed McEnteer, Bob Nolle, Hazel Loeffel, Marilyn Hansen, Elva Thomas, Jean Macke, Doris Hopkins.

Fifth Row: Fred Griffiths, Robert Crowell, Ed Kappel, Ed Housley, Cyril Ivory, John Templeton, Dick Mills, Wallace McClelland, Glenn Geiger, Leo Grosso, Walden DeVore, Ted Buchek, Don Denkle, Gilmore Williams, Harry Urell, Bob Charters, Bill Hall, Fred Hamilton, Bill Underwood, Dalton Courtney, Bob Stutt.

Sixth Row: Earl Miller, Ernest Giles, Louis Ringling, Dick Evans, Frank Glenn, Mike Dulski, Tom Ulam, Lewis Smith, John Clapperton, Bob Bender, Leo Haller, Jack Wilson, Allen Beck, Pat Flannigan, Melvin Jones, Leo Chess, Bill Truschel, Dick Collins, Bill Walton, Dick Grant.

Seventh Row: Bob Nixon, Robert Lindsay, Bob Dawson, James Harrison, Harry Wight, Nick Stabile, Clark Hogsett, Glenn Williams, Bob McEwen, George Hanson, Bill O'Melia, Ray Frodey, Walter Labrenz, Bill Douglas, Francis Klancher, Bill Taylor, Dick Law, Jack Rider.

Eighth Row: George Foster, Edmond Colaianni, Don Edmundson, Dick Knowlson, Edward Aires, Bill Whitfield, Ed Hammel, Edmond Smith, Kay Smith, Bill Baker, Roland Sutherland, Bill Housley, Bob Burlingame, Stuart Champion, Jim McCormick, Frank O'Hara.

Tenth Grade



First Row: Margaretta Eckles, Elizabeth Elliston, Marietta Young, Mary Jane Nickeson, Anne Schlough, Jeanne Hutchison, Bernice Harris, Dorothy Simon, Virginia Bowland, Margie Anderson, Peg Taylor, Eunice Smith, Betty Williams, Margaret Stahlnecker, Charlotte Thomas, Ruth Love, Jeanne Jordan, Lucille McCurry, Betty Whitfield, Phyllis Brooks.

Second Row: Shirley Nelson, Margaret Brown, Wilma Andreen, Pauline Galenec, Jane Ross, Betty Shakespeare, Inger Arnesen, Nancy Zwinggi, Kathryn Glenn, Nancy Noyes, Pompea Cardarelli, Ellen Haberman, Catherine Brannon, Nancy Roney, Marjorie Survinski, Louise McClymont, Jean Ehlers, Dorothy Huffman, Ouida McGehee, Betty Madden, Elsie Arnesen, Virginia Metcalfe, Joan McGinniss, Marilyn Uhlinger, Mary Lee Barton, Madeline Clark.

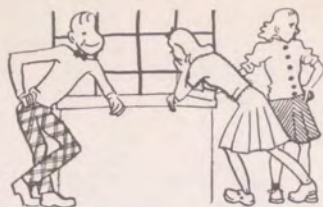
Third Row: George Shields, Raymond Bower, Dick Schaefer, Richard Everline, Bill Scott, George Mayall, Evelyn Rees, Margaret Livingston, Florence Gregory, Laverne Barrett, Devora Ballon, June Sinewe, Peggy Gaylord, Myrel Ulmer, Marion Kuehner, Shirley Blass, Sprudina Pennick, Jean Stanley, Mary Catherine Wolfe, Ruth Duling, Sophie Caster, Bob May, Elmer Tracey, George Graham, David Griffiths, Robert McRoberts, Jack Stringer, Sam Aston.

Fourth Row: Henry Petrick, Paul Good, Bill Bertelsen, Jack Powell, Harry Ammann, Russell Wolfertz, Dale Reckley, Richard Koch, Charles Brown, Malvin Sander, Bob Short, Bob Kirk, Don Williams, Joe Cavalovitch, Roy Beatty, Alec Luft, Dean Copetas, Jim Demmel, William Lytle, Dick Conroy, Mike Cavalovitch, John Sowers.

Fifth Row: Bill McGee, Charles Culbertson, Bill Koenig, Bob Reed, Ray Aitken, Don Boyer, Bob Keene, Daniel Winslow, Lynn Heiss, Wallace Root, Jim Beam, Tom Carr, Douglas Baird, Carlton Jewett, Erroll Dexter, Bob Little, Harold Hammerstrom, Bill McCormick, John McCall, Lee McQuiston.

Sixth Row: Norbert Buckley, Jack Crawford, John Matragas, Jack Dragonette, Philip Weisel, John Lewis, Charles Roberts, Jim Paulos, Bob Rick, Bob Campbell, Bob Seiferth, Vincent Joyce, Ralph Koerber, Jack Burley, Bill Baker, Wallace Prass, Rolla Miller, Robert Zima, Walter Schumm, Bob Drake.

Seventh Row: Carolton Shaffer, Bob Creps, Jack Vogel, Bob Holstead, Ray Robb, Frank Ross, Bill Philips, John Ketchum, Harold Simmons, Charles Hugus, Bob Baker.



Tenth Grade

First Row: Anna Mae Miller, Peggy Medley, Evelyn Davison, Eleanor Dunlap, Priscilla Tite, Helen Stafford, Maxine Balch, Pattie Findley, Virginia Bellingham, Louise Brown, Jane Murray, Peggy Alderson, Marjorie Ruppelt, Janet Snyder, Betty Hughes, Genevieve Dulski, Margaret Lawrence, Kathryn Tepe, Martha Atkins, Florence Dutton.

Second Row: Mildred Pecovish, Margie Funk, Jean Anderson, Betty Lee Keane, Megan Whelan, Elizabeth Hofrichter, Beverly Knechtel, Marcella Hofrichter, June Shepler, Elide Romanucci, Peggy McElroy, Mary Catherine Dwyer, Lucille Stahlman, Sonia Grufman, Patty Lou Adam, Catherine Miller, Evelyn Lang, Margaret Slattery, Gertrude Brannon, Margaret Bergman, Ethel Weisman, Gloria Kohlmyer, Virginia Woody, Peggy Greulich, Audrey Allee, Marjorie Parks.

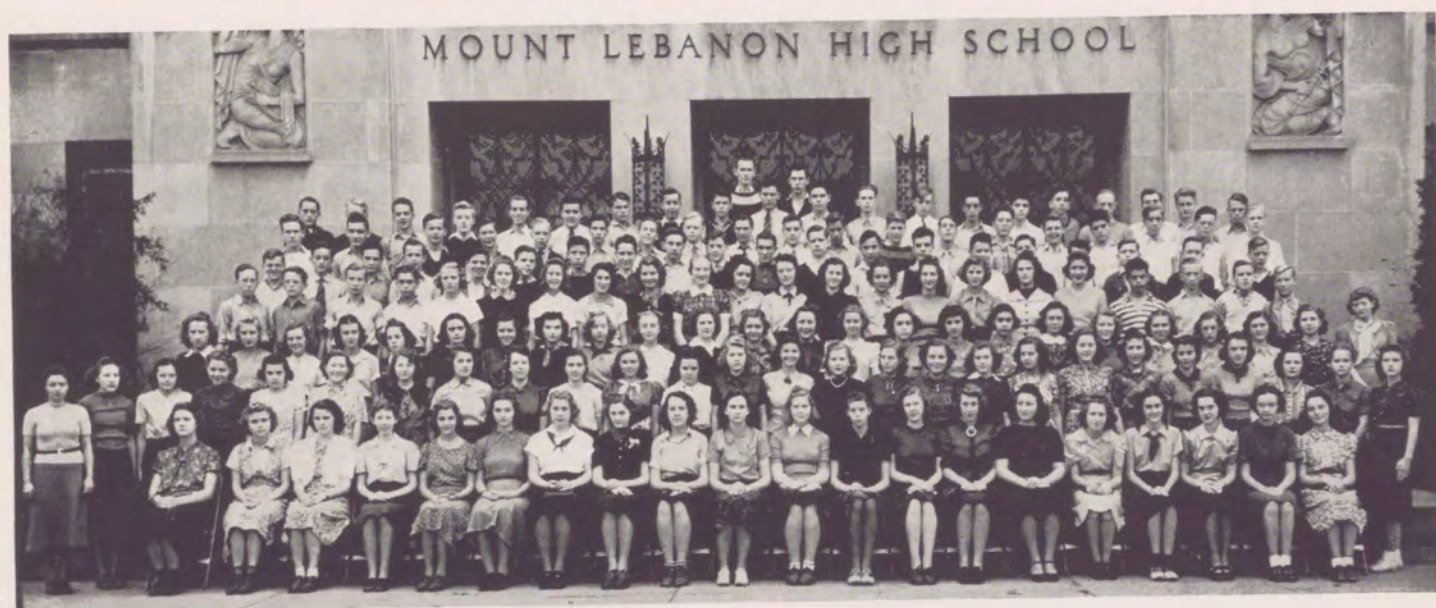
Third Row: Mary Merovich, Bette Fleckenstein, Jean Hosick, Betty McKee, Betty Grubbs, Patricia Scott, Elizabeth Bush, Mary Lou Betz, Evelyn Barteaux, Patricia Ryan, Arlene Schroth, Dorothy Pierce, Barbara Hahner, Patricia Helland, Irmalie Scheuneman, Betsy Hamilton, Barbara Mathews, Dorothy Barto, Marjorie Graham, Margaret Makar, Jane Becraft, Barbara Brill, Naomi Hern, Jean Ramsey.

Fourth Row: Cleland Nelson, Bill Feisley, Bill Longstaff, Don Keagy, Gloria Weiss, Billie Jean Huber, Virginia Heron, Leona Cipriano, Sally Runyon, Marilyn Cavanagh, Jean Clark, Jean Cunningham, Marianne Hatton, Ruth Gordy, Eileen Hilf, Mary Ruskell, Leona Betz, Virginia Volkay, Nick Valicenti, John Magnus, Jack Langstaff, Wesley Welden.

Fifth Row: Jim Rector, Dick Forgette, Walter Smith, Bill Remensnyder, Jim Wilfong, Bob Towner, Tom Hartman, Jim Culton, Braden Swaney, Bob Culhane, Bob Fleischauer, Baker Kearfott, Dan Bode, Earle Patterson, Charles Pratt, Wesley Cronmiller, Bob Kaschak, Russell Clatty, Benton Kline, Steve Gaber.

Sixth Row: Tom McSteen, Karl Sittler, Jim Champion, Ken Haughin, George Senheiser, Warren Gorham, Robert Leech, Ed Ryan, Bob Dressing, Albert Lammert, Franklin Elliott, Gordon Stewart, Raymond Heinen, Warren Martin, Edwin Campbell, Robert Roberts, Jim Seifert, John Emery, John Johnson.

Seventh Row: Jack Glessner, Bob McCue, George Dulabon, Ellsworth Harris, Bob Clarke, John Hannon, Duncan Brown, Charles Mehling, Dale Hamilton, Ed Sweet, Vincent O'Brien, Ellis Booker, Don Kindschi, Ben Kenny, Harry Ruppel, Roger DeJohn, Jack Ward, Jack Bergman, George Cruikshank, Joe Hardy, Paul Hawkshaw, Ray Deemer.



Ninth Grade



First Row: Maxine Acosta, Dorothy Coons, Dorothy Walsh, Jean Purves, Ethel Stark, Alice Means, Gayle Thompson, Constance Hatton, Mary Sebring, Patty Green, Edith Thompson, Marilyn Streich, Rosemary McNamara, Ellen Witte, Nancy Cameron, Betty Rank, Martha Coate, Sara Ross, Ruth Maier, Betty Paulson, Betty Harsch, Mary Conaway.

Second Row: Betty Killinger, Pearl Shapiro, Helen Vincent, Mary Frances Mahaffie, Jacquelyn Kline, Ruth Walters, Thelma Henderson, Clara Tebbets, Barbara Whelan, Betty Weisel, Lois Hervet, Nancy Matthews, Mary Ellen McConnell, Mary Friday, Laverne Patter, Irene Fekete, Jean Watson, Marilyn Chrystal, Mary Ellen Henderson, Mary Vietmeier, Mary Ann Snowden, Louise Koenig, Betty Long, Patty Wiggins, Helen Louise Meyers, Carrie Waddell.

Third Row: Dorothy Luss, Joyce Aiken, Betty Seifert, Laverne Susanna, Elaine Alexander, Jean Deutsch, Patricia May, Virginia Rohrkaste, June Schwartz, Grace Heck, Violet Herzog, Joan Daker, Lois Crawford, Betty Butler, Mary Casper, Florence Colaianni, Irene Bucher, Eleanor Ann Collins, Mary Ann Atherholt, Alberta Baumann, Janet Darby, Virginia Schrader, Joyce Marshall.

Fourth Row: Dick Rohrich, Marie Meding, Julia Makar, Jane Stewart, Harriett Stine, Sally McFall, Blanche Burnett, Lois Miller, Anne Brown, Virginia Perry, Marguerite Kift, Shirley Parker, Jane Ernest, Glenys Mechem, Betty Haynes, Janice Meuschke, Joan Hallam, Margaret Auty, Dick Seifert.

Fifth Row: Jack Sholl, David Faloan, Vincent Lascheid, Howard Stuckeman, Bill Witney, Lawrence Rank, Lucian Caste, Acky Copetas, George McCall, Joseph Hardwick, Robert Edmundson, Walter Kraber, Scott Stanley, George Loos, Edward Amend, Jack Kimes, Walter Brand, Bill Sumner, Tom Flanigan.

Sixth Row: Jim Miller, Bruce Murray, John Ulam, Harry Hoffner, Bob Anderson, Charles Casper, Hubert Hanks, Joe Stewart, Charles McClelland, John Weimer, Bill Griffith, Jack Meyers, Bill Aldrich, Jack Himmelrich, Jack Thelan, Jim McMichael, Frank Miller, John Sack, Bob Mayfield, Charles Reed, Bill Garner.

Seventh Row: Bob Meneilly, John Murphy, Bob Perry, Bill Garner, Jim Cooper, Walter Snyder, Bob Jenners, Chester Edmunds, Jack Boor, John Spirka, Glen Campbell, Leslie Davis, Richard Colgate, Edward Fink, Rolfe Harper, Hugh Hamilton, Donald Logan, Bill Pritchard, Max Salisbury.

Eighth Row: Charles Adams, Bob Bell, Jack Richards, Grant Evans, Bill Tarn, Bob Ricker, Jim Murphy, Richard Hogsett.



Ninth Grade

First Row: Carmella Benedetti, Barbara Shaffer, Marilyn McBride, Isabelle Romain, Nancy Wolfe, Lillian Pasqual, Jean Ellen Stewart, June Fairman, Ann Lee Alexander, Carol Jean Waechter, Barbara Bacon, Minnette Fritts, Joan Baserman, Evelyn Burtis, Mary Lu Pursell, Lois Horning, Gene Weigand, Doris Hanks, Roberta Emery, Dorothy Goldsworthy.

Second Row: David Finn, Helen Lastooka, Winifred Hilf, Betty Kail, Dolores Thompson, Barbara Beatty, June Christman, Betty Schoenberger, Virginia Stutt, Barbara Clapp, Ruth Louise Rice, Shirley Phillips, Selma Drumm, Barbara Hofrichter, Patricia McCartney, Lucille Ortolf, Camilla Kerrigan, Helen Duling, Margaret Livingston, Edna Wood, Barbara McClain, Betty Wendell, Nita Del Grande, Florence Hatz, Stella Cheberenchick, Evelyn Matthews, Rosemary Heinen, Mary Agnes Voskuhl, Peggy Albright, Margaret Soloman, Virginia Sommer, Gloria Lamark, Eleanor Cain.

Third Row: Edward Smull, Bill Keeling, Stuart Zimmerman, June Black, Clarissa Williams, Carol Hickock, Mary Vanzin, Blanche Northart, Geraldine Barrett, Mary Caste, Peggy Bowlus, Betty Kleppick, Helen Boss, Helen Stabile, Celina McGovern, Grace Kallock, Laverne Boss, Betty Lou Bell, Lorna Gulley, Patsy Adam, Shirley Clayton, Madeline O'Brien, Ruth Meier, Virginia Reiter, Alice Lee Gardner, Kathleen Jamison, Wesley Coltman, Russell Stechschulte, Alan Weatherell, Edgar Bard.

Fourth Row: Jack Keeler, Charles Schaffer, Alvin Thomas, Charles O'Hanlon, Jack Krieger, Bill Simmerman, Charles Davis, Albert Davis, Jane Mensch, Marjorie Orr, Betty Lu Moreland, Mable Poster, Emily Fergus, Jacklyn Tuttle, Lorraine Parkins, Dolores Van Dugteren, Virginia Mulhollan, Jane Daley, Laura Turner, Mary Martha Phillips, Janet Adam, Regina Opferman, Katherine Diery, Jane Cramer, Nell Collins, Dick Adamson, Warren Hoffman, John Beitler, Tom Hopper, Kenneth Metivier, Robert Sullivan, Jay Arthur, Walter Blume.

Fifth Row: Bob Kane, Jim Finn, William Zewe, James McVay, William Schrader, John Logan, Tom Greulich, John Sieger, Henry Buchek, Tony Grosso, Gerald Knaus, Dick Cranston, Tom Lavelle, John Friend, Bill Eckenrode, Jim McPeak, Gerald Creehan, Donald O'Connor, Art Creehan, James Brezger, James Davies, Robert Nagel, Bill Furst, Dick Owen, Jack Paulus, John Long, John Kough.

Sixth Row: Frank Kenney, Alvin Dyer, George Kletch, Harry Brown, David Danner, Robert Budden, George Fisher, Matthew Purpura, Bill Barr, Clyde Farmer, Frank Susco, Edward Happe, Pem Nichols, Bill Trageser, Robert Manley, Jack Himmelrich, Bob Goldsmith, Dick Russon, Harry Herlinger, Llewellyn Botula, Harry Lose, Paul Evers, David Woodworth, James Cotts, Bill Sellors.

Seventh Row: James Waters, Charles Wolf, Elmer Dixon, Robert Quinn, Ralph Coltman, Norman Kern, Richard McEwen, Ross Smith, Bill Arther, Robert Teasdale, Jack Tabler, Robert Goss, Jack Moore, Rand Schenck, John Rees, Paul Vieth, Charles Judge, Eugene Karsh, Ed Fonzi, John Buckey, Paul Kernan.

Eighth Row: Bob Corbett, Tom Duff, Francis Daube, Walter Taylor, Bill Corbett, Donald Hubbard, Bill Cummins, Clare McDermott, John Frank, John Moran, Bud Babbitt, Gene Smoot, Stephen Ward, Frank MacQuown, Donald Hast, David Davies, Bill Ross.



Eighth Grade



First Row: Sara Giles, Elaine Risch, Florence Henderson, Marilyn Pringle, Marian Lander-gott, Diana Ketchum, Nancy Mills, Marjorie Eva, June Buckingham, Janet Lewis, Joan Schaeffer, Jane Bullions, Margery Graham, Carol Miller, Mary Lou Aitkin, Dorothy Tattersall, Jane Franham, Rosemary Kearfott, Joan Kalbach, Willa Hance, Jean Hopper, Doris McCormick.

Second Row: Margaret Wheeler, Jacqueline Alexander, Caroline Crawford, Marie Scar-vace, Gloria Corbett, Nancy Urner, Dorcas Rumsey, Edna O'Donnell, Margie Ham-merly, Elaine Caramela, Betty Jane Hyams, Mary Jane McIlvried, Gail Mensch, Lois Moriarity, Wanda Garver, Eva Thomas, Mary Brown, Sara Ream, Ruth Judge, Gloria McQuillen, Mary Lou Lamark, Patricia Forbes, Barbara Hixon, Dorothy Brill.

Third Row: Virginia LeFurgy, Evangeline Matragas, Catherine Ball, Eloise Fiand, Ruth Simmons, Patty Gatter, Mildred Mowery, Jean Linnert, Dorothy Deutsch, Jean Law-rence, Jean Fisher, Patsy O'Brien, Betty Donges, Carolyn Thomas, Nancy Charles, Martha Mackey, Audrey Colledge, Jean McGhee, Maribelle Powell, Joan Marquis.

Fourth Row: Bill Bode, Jim Davis, John Bruno, Harry Keck, Walter Huhn, Bob Bam-ford, Ed McAninch, George Pace, Bob Miller, Ann Haygood, Lucy Frenkle, Gloria Langstaff, Virginia Kough, George Ritchey, Charles Haus, Jim Parmley, Hobart Chivers, Fred Walter, Bob Witney, Bill Fee, Bob Oates, John Bermel.

Fifth Row: Charles Carson, Frank Price, Boyd Speaker, Bill Werme, George Housley, Bob Romaine, John Clarke, Charles Hurley, Bill Evans, Bill Perkins, Roy Clark, Charles Esgar, Bill Davis, Ted Ramsey, Roy Loughborough, John Taylor, Jack Neilson, Warren Edwards, Peter Schroeder, John Davis.

Sixth Row: Bob Winslow, Bob McClain, Lester Wahrenburg, Ralph Orr, Bob Barbrow, Frank Benson, Piersol Murray, Martin Arden, Jim Stone, Victor Minnotte, Earl Culli-son, Charles Stein, Bob Scharnberg, Guinn Price, Roger O'Connor, Jack Hardwick, Varick Schwartz, Dick Young, Norman Phillips, Richard Frost.

Seventh Row: Glenn Brueggemann, James Duchene, Jack Marshall, Donald Lindeman, Phillip Bray, Bill Wick, Bob Murphy, Walter Roberts, Bill Yohe, Richard Curtin, Ralph English, Charles Swartz, Bob List, Bartlett Giles, Bill Gilfillan, Rudolf Hofer, Bill Shannon, Bill McCaskey, Richard Boosinger.

Eighth Row: Jim Mawha, Paul Watkins, Robert Clatty.





Eighth Grade



First Row: Olive Gallaher, Marcia Bulger, Mildred Franson, Mary Hofsos, Katherine Grimenstein, Julie Ann Randall, Bardarah McCandless, Alice Pillischer, Betty Peat, Julianne Tiegel, Charlotte Abbott, Ann Bailey, Barbara Huber, Melba Schmidt, Elizabeth Hislop, Ruth Anderson, Martha Kenan, Lucille Coons, Nancy Rice, Peggy Patton, Francis Fuller, Sally Connor.

Second Row: Ann Babbitt, June Shepard, Gloria Findley, Elizabeth Fee, Patsy Moss, Marilyn Sidnell, Ruth Diery, Jane Purchard, Camille Vallerina, Alma Jean Richards, Wilma Hawkins, Ada Louise Ringdal, Nancy Lee Nicklas, Gloria Hilf, Julia Ann Rust, Virginia Simmons, Nancy Tarn, Margery Little, Margery McMillan, Muriel Brown, Betty Parke, Katheryn Acosta, Margaret Gardner, Jean Hogsett, Peggy Blair, Marjorie Morris.

Third Row: Anna Haines, Lois Minnotte, Lillian Underwood, Martha Steele, Carol Himmelrick, Doris Jean Crocker, Audrey Leonard, Dorothy Kiefer, Phyllis Conner, Margery McCall, Maurine Hatman, Shirley Stevenson, Annette Francis, Thalia Meyer, Shirley Tisdale, Virginia Wood, Nola Grimes, Jean Beam, Jane Gaiser.

Fourth Row: Bill Lascheid, Jim Cardarelli, Paul Del Grande, Bob Boyle, Joe English, Harold Bradfute, Tom Hanover, Richard De Longa, Dick Mager, Donald Rhodewalt, Walter Anderson, Jim Mayer, Byron Meyer, Harold Taylor, Tom Orr, Bill Ballon, Mert Proctor, Ugo Siconolfi, Bob Keagy, Howard Bower.

Fifth Row: David Hatz, Elmer Yost, Bob Reading, Bob Stoner, Bill Moore, Bob King, Lee Hutton, Arthur Griffiths, Bob Gathmann, Bill Kraft, Leonard De Longa, Laird Kroh, Charles Gonder, Bob Starling, George Kroher, Joe Kelly, Bruce Harrison, Dave Smith, Kenneth Kimes, August De Giovanni.

Sixth Row: Merle Adams, Gordon Lunsford, Jim Feisley, Robert Pelz, Bob Hasselman, Hultz Giles, Bob Lewis, Carter Ruskell, Norman Wilson, Bill Morton, George Smith, Calvin Hartman, Leslie Nelson, Bill Dunkle, George Abbott, Ray Simmons, Glenn Butler, Bill Bucher, Nicholas Krayner.

Seven A Grade



First Row: Rosa Lee McNulty, Shirley Ringdelheim, Cornelia Lopez, Peggy Kline, Audrey Proctor, Jane Blair, Joanne Greer, Eileen Hoffman, Joan Miller, Nancy Waterhouse, Kay Gould, Carol Clark, Peggy Ann House, Margaret Huber, Louise Whitcomb, Janet Scott, Millicent Barnard, Carolyn Craft, Helen Zimmerman, Mabel De Lano, Phyllis Wolfe, Corinna Bernd, Ila Hallowell, Carolyn Drake, Jane Hamilton.

Second Row: Marilyn Andreen, Marilyn Sandborn, Susanne Rinehart, Virginia Graham, Marilyn Ramsey, Mary Jane Barthelmes, Jean Hathaway, Carolyn King, Vivian Uhlinger, Helen Corner, Gretchen Haughton, Nancy Louise Kenny, Betty Jane Mercer, Jean Staggs, Janet Lichtenthaler, Virginia Schweinsberg, Jean Jones, Mickey McCollum, Lucille Mathews, Vera McFarland, Irene Chotner, Helen Baumbach, Lois Burke, Dorothy Hilf.

Third Row: Barbara Wire, Doris Appel, Martha Wilber, Anna Mae Schweitzer, Marilyn Buncher, Mary Peoples, Emmajean Aston, Patsy Heckler, Adriane Handel, Mary Fodel, Mary Harper, Peggy Kuehner, Alice Romain, Jean Angle, Eva Clark, Virginia Reese, May Dee Scheuneman, Mildred Brahm, Audrey Stahl, Betty Yeagle, Patricia Van Duyl, Belle Hanson.

Fourth Row: Barbara Johnson, Barbara Skoog, Marion Korb, Ruth Wright, Marjory Huntsberger, Mary Foster, Lois Anne Lowe, Huberta Murphy, Theda Brinkam, Marilyn Ricker, Janet Lee Philips, Jean McGovern, Charlene Hood, Norma Appel, Helen Koontz, Natalie Leech, Joan Peterson, Joan Poellet.

Fifth Row: Charles Haviland, Bob Ferguson, Jim Thompson, Howard Forbes, Bob Bertelson, Bill Lowe, Dan Harrison, David Charnell, Bill Lambie, Kenny Marshall, Harrison Muller, David Uline, Bob Adkins, Boyd Grimes, Charles McGovern, Norwood Allen, Russell Hamler, Joe Campbell, Lee French, Bob Ziegler, Leo O'Donnell.

Sixth Row: Hale Hill, Joe Scarvace, Jack Geinzer, Dick Toler, George Turnbull, Bob Keagy, Malcolm Sheppard, Bill Eiler, Louis Greulich, Jack Collins, Don O'Hara, Jacob Pursell, Douglas Anderson, Jack Green, Dan Williams, Fred Boder, John Marlow, Mawin Rapp, Boyd Cleaver, James Kirk.

Seventh Row: David Gibson, David MacKenzie, Charles Mershon, Dick Peters, Herbert Johnson, Bob Crowe, Don Brown, Joe Cook, Jack Eichenberg, Malcolm Agnew, Bob Whitehill, Joseph DeLuke, Bill Thomas, Walter Remp, Donald Young, Frank Beal, James Ross, Dan Wersant, Jim Schenck.

Eighth Row: Charles Knache, Frank Southworth, Alfred Burnham, Dalton Rumbergen, David Craft, Bob Ball, George Adair, Bill Knechtel, Bob Baldinger, Charles Hamblen, Raymond Schaefer, Paul Hoerath, Joe Kirsopp, Glenn Frazee, Harry Fonzi, Donald Wells, Charles Studeny, Steve Bleecker, Bill Porter, Allen Calhoun.



Here 'n There



Tenshun!

Did you say Ireland?

Where's the
"chicken" inspector?

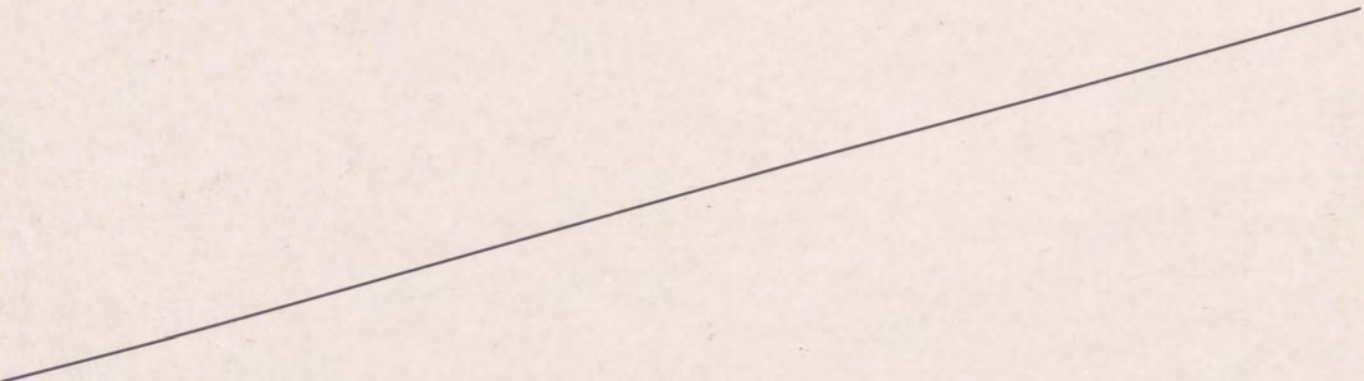
Hold it!

When do we eat?

Sweet Nothings

Where'll it get you—
in the end?

All *dated* up



Leaving our scholars to their studies, we sail peacefully along the airways. But not for long---soon we are compelled to make a forced landing, after being bombarded by requests such as these:

“Get your red-hot weiners here. Only 5c and smothered in mustard.”

“Come, come my good man, and have you purchased a *Lantern* yet?”

“Will you please buy your *Log* from me? This year we’re going to have the duckiest pictures and things.” This vague petition comes from a *Log* salesman, pleading in the undaunted spirit of “Do or Die.”

These entreaties plus the stampede of committee members hastening to their meetings nearly overcome us, but we finally escape to the hills on our *Magic Carpet*

MT. LEBANON PUBLIC LIBRARY



ACTIVITIES

Cream of the Crop



● *First Row*: Margaret Martsolf, Jane Schlough, Louise Nichol, Louise Wild, Dorothy Kaessner, Edna May Johnston, Mary Ochsenhirt, Septa Sanderson ● *Second Row*: Harold Langstaff, Kurt Meuschke, John Hurford, Murray Potts, John Goldthwait, Ted Burtis, Dave Young, Richard Horning, Bill Cranston, Jack Shields, Charles Luss, Glenn Heck, Bill Campbell.

National Honor Society

And there, gentle readers, are the prides of Mt. Lebanon, the cream of a Senior Crop, in other words, our star students.

All chosen by a faculty committee, these fortunate few were initiated into the mysteries of the National Honor Society, of whose "promised land" many have dreamed. Much consternation annually confronts the committee however, for WE, the Seniors, are of such unusual calibre,—that, well, when only fifteen per cent of the graduating class, ten per cent of twelve B, and five per cent of eleven A are admitted to those golden portals of knowledge, that leaves quite a few in mourning! Most of us, however, are content to brag about our classmates, whose superior character, scholarship, leadership, and other ships of various virtues, have commended them to the Society.

Since nineteen thirty-one Mt. Lebanonites have had the pleasure of wearing their noses as high as nature permitted and slapping the backs of

their prize scholars, usually the more modest, at that.

Seriously enough, it is fortunate for some that our judges do not rely so much upon grades as a ruler, for only an upper third rating is demanded, but the judges seem to concentrate on character and student leadership. Usually after one year's attendance in the school, perhaps winning an Activities key, and keeping his name clean from references of paperwads, a yet undaunted spirit is led forth into that dreamland of honor. Of course, the members and their shiny gold pins, are always accusingly apparent to you (and to your parents!) and still, they heighten the misery of us unfortunates by walking about in a thoroughly understandable daze.

As wholly envious as this may sound, we all have to tip our caps to a grand bunch of kids, and forever stamp them in thanks for "SERVICES RENDERED."

Key to Success



● *First Row*: Janet Giles, Betty Lacy, Louise Nichol, Louise Wild, Dorothy Kaessner, Edna May Johnston, Mary Ochsenhirt, Septa Sanderson ● *Second Row*: Glenn Heck, Kurt Meuschke, John Goldthwait, Bill Cranston, Henry McCall, Jack Shields, Bill Campbell, Dave Young.

Honor Award Society

At last it's here! (Sighs of anticipation). Do I hear querulous voices demanding w h a t has suddenly brought the light into my eye? That long-awaited letter perhaps? No—guess again. That's right, Senior Assembly Day! On that historic occasion all the deserving young lads and lassies who have labored long and hard in the cause of school activities receive their reward—an Activities Key or Guard.

Five hundred strong, we all tramp over to the Washington School Auditorium, scramble to our seats, and begin wondering who will be the lucky people receiving keys.

(Excerpt from 12B student's mind—"Ten, twenty, twenty-five. Let's see now, I need 90 points for a key. If I'd only have signed up for a few more activities when those application blanks were distributed. Well, I'll really get down to business next

semester and watch those points mount up, I hope!")

Letters, National Honor pins; here it comes next on the program—"The following people receive Activities Keys and Guards—Mary Smith, Paul Jones, etc." Someone nudges Mary who has a rather blank look on her face. "Go on up, Mary." Recovered from her surprise, she joyfully marches up to the platform and amidst applause receives her Key. The scene changes and next day we see Mary proudly striding down the hall, Activities Key very much in evidence. Lucky girl, that Mary, but she deserved it. After all she was an honor student, a member of the Ways and Means Squad, reporter for the *Lantern*, and even found time to be in the operetta. Since she's only in 11A, she probably will be working for her Guard next year, which requires a total of 200 points!

All Work and No Play



Usher Committee

Decorating Committee

Ways and Means Committee

Honor Committee

Traffic Committee

Library Committee

Scholastic Committee

Executive Board



Traffic

First Row: Adams, Barrett, Nichol, Vincent, Riffle, Maloney, Gehrett, Wick, Schultz, Schaffer, Dee, Colgate, Mayleben, Sanderson, Stuckeman, Bullions, Hutton, Eva, Charters, Osbourne, Brenkus, Cone, Harrison.

Second Row: Linnert, Geohring, Schlough, Campbell, Rearick, McNary, Proctor, Johns, Harlan, Jolly, Schenck, Clark, Holtz, Kirsopp, Say, Lacy, Jordan, Simmons, Hibbs, McMaster, Johnston, Lose, Wheeler, Hesse, Campbell.

Third Row: Wild, McClain, Young, Nolte, Mohl, Baker, Raeder, Boyd, Fisher, Hance, Osbourne, Ivory, Condit, Martsolf, Cooper, Rohrkaste, McFall, Templeton, Ufer, Schwager, Wyre, Haller, Dietrich, Woodburn.

Fourth Row: Bucher, Kroh, Halen, Dapper, Cargo, Fuchs, Goldthwait, Flannigan,

Committees



Squad

Stoner, Williams, May, Matheny, Templeton, Hamilton, Lloyd, De Long, Reichhold, Hugus, Procter, Krayer.

Fifth Row: Shanor, Becraft, Manheimer, Law, Ballard, Whitelock, Brady, Hawkshaw, Clark, DeBenedictis, Andrews, Nixon, Schaffer, Sandborn, DeJohn, Quillen, Heck, Magnus, Charters.

Sixth Row: Clarke, Alderson, Richards, Potts, Eisenbeis, Graham, Kramer, Benz, Hance, Proctor, Brown, Davis, Murphy, Douglas, De Longa, McCready, Gottschalk, Duchene, Gardner, Tarn, Shields.

Seventh Row: Simmons, Faloon, McCall, Prindle, Hurford, Fitch, Shepard, Shields, Donahoe, Baker, Bowlus, Cullison, Murphy, Charnell, Lewis, Cross, Kroh, Nickeson.

Eighth Row: Horning, Kane, Bucher, Donahoe, Copetas, Barthleemes, Barrett, Fisher.



Cafeteria Committee

Bulletin Board Committee	Attendance Committee
Publicity Committee	Social Committee
Poster Committee	Public Address Committee

Log Rolling



BUSINESS STAFF

First Row: Ellen Campbell, Miss McClure, Marjorie Weatherwax, Bill Lloyd, Jeanne Linn, Beryle Vincent, Bob Campbell.

Second Row: Bob Popp, Bob Faloon, Dick Creps, Louise Nichol, Virginia Raeder, Miss Yoakam, Miss Harling, Bob Hance, Esther Harrison.



LITERARY STAFF

First Row: Shirley Hutchison, Betty Jane Samuels, Eileen McGinnis, Bill Arther, Mary Ann Hunter.

Second Row: Doris Cone, Jean Wyre, Bill Cross, Betsy Anne Plank, Dot Kaessner, Ethel Lorenz, Ruth Templeton, Lois Stuckeman, Miss Neumarker, Martha Lose, Duncan Brown, Bill Douglas, Hap Langstaff.

Just because this little piece is about "us", we're not becoming unduly modest. For now you see all the literary, business, and art fiends of Mt. Lebanon High gathered round for the annual confab to roll up another *Log*.

The opening twig was snapped, as usual, with a big circulation drive, and thus did Logging season begin. Shaping up the publication with more of a view toward pictorial candor, we sought to visualize school life rather than to describe it. Even going previous editions one better, we inaugurated a representative picture of each Executive Board Committee.

However wider our scope in photography became, there were yet the inevitable deadlines for assignments rolling in about February. Yes, all the "overnight" features, (like this one aided so much by a masticated pencil,) a hurried article, just break-

ing its word limit, and a rehashed story bearing all the vivacity of cold mashed potatoes, made up a leaf in the nineteen thirty-nine report of school life.

Eventually, with not one of those last desperate works escaping the literary blue pencil, the presses furthered the realization of such a nightmare, and lo! brought forth a *Log*, just one, for unbounded criticism. Nevertheless, when all editors and sponsors had cast a critical eye over the last draft, and heaved one hopeless sigh, "the presses rode again" and have presented you with *Log*, No. Two Hundred Fifty-three.

We have no excuses, except to say we all did our best. Perhaps someday, after "time has healed all things", this yearbook may rekindle some grand old memories of 'thirty-nine without too much thought for us who recorded it.

Lebanon Log

Lead Kindly Light



SENIOR HIGH STAFF

First Row: Betty Jane Samuels, Louise Nichol, Virginia Raeder.

Second Row: Bill Campbell, Jack Ward, Marjorie Weatherwax, Dotty Greiner.

Third Row: John Goldthwait, Dick Creps, Bob Nickerson, Beverley Lewis, George McGlaughlin, Charlotte Schultz, Miss McLaughlin.

Fourth Row: Kay Smith, Martha McFall, Joe Donahoe, Grace Wild, Betty Mae Erenrich.



JUNIOR HIGH STAFF

First Row: Inger Arnesen, Grace Wild, Peggy Albright, Walter Brand, Muriel Brown.

Second Row: Bardarah McCandless, Audrey Colledge, Philip Bray, Betty Lou Morland.

Third Row: Virginia Mulhollan, Bob May, Bob Meneilly, Jean Daker, Lois Crawford.

Lebanon Lantern

Every two weeks (that's bi-monthly to our two scholars) a four page five column masterpiece is grabbed ravenously from the innocent seller and a dime is thrust into his virgin palm.

Our *Lebanon Lantern* is a liberal education in itself, and confidentially, it's the only one the mob at large worries about. Of course, Thompson or Winchell doesn't exist in the original there, but in the course of one year, "Devilette" has covered gossip from paperwads to romance.

Dispensing with the front page, which covers only "events", and Devilette, we have left, in order of common interest, the pictures (candid, unfortunately), The Ghost Writer, Lebanonchalt, and the Want Ads. The pictures need no comment; they speak for themselves only too well; but the Ghost Writer! everyone reads him, for only a spook could make such remarks about our

athletes! Of course it goes without saying, if you rate in Lebanonchalt, you're made; your fame (if any) is secure. But for real human interest, take the Want-Ads. There's never yet been a frayed picture of Douglas Fairbanks, Junior, that hasn't been auctioned off.

I suppose that covers most everything. Too much maybe. I shudder to think of associate editor Joe Donahoe, Dick Creps, or John Goldthwait ever reading this. I only pray their noses are yet in the clouds after our "Columbia School Press" publication rating where we placed fourth among district newspapers.

Well, I hope this little piece has inspired you to greater heights, (bigger and better paperwads, hours and hours of detention, and so forth), so that next year your name will darken a corner of the *Lantern*.

"Holiday"

"Holiday," a comedy in three acts by Phillip Barry, played to a capacity crowd on November 17th and 18th, when the January Senior Class presented their annual play.

A holiday it was too for everyone except Miss Stoner who deserves much credit for directing our local Thespians along the right path.

Linda Seton (Doris Disney) of the social register Setons, took a holiday from being a bachelor girl, and finally married Johnny Case (Charles Hoffman), who was taking a holiday from work. This action took place much to the chagrin of Papa Seton (Kurt Meuschke) and his bewitching daughter (Mary McCollum), already betrothed to Johnny, while Linda's brother (Bill Kramer) applauded long and loud from the side lines.

Since the Seton household was unaccustomed to such amorous enthusiasm, they had no time for Edward Seton's cousin, Seton Cram (Chris Bauer) and his affected wife (Septa Sanderson) who kept bobbing in and out of the scene at the most inopportune moments.

Linda's friends, Nick Carter (Jack Cargo) and lovely wife, Susan (Eddie Johnston), ably assisted the Crams in trying to turn the story into a lighter vein.

Bob Popp, Karl Fischer and Ruth Watson, as two butlers and a maid, also played their parts with distinction.



"Stage Door"

Colossal! Marvelous! Thus spoke the audience after the curtain rang down on the June Senior's class play, "Stage Door" presented April 20 and 21.

Its plot—a group of girls all trying to make good on the Broadway stage.

Its characters—a stage "has been," the landlady, Mrs. Orcutt (Sue Powell), who runs the "Footlights Club," a boarding house for "twenty we of the theater's"; the melancholy Kaye Hamilton (Ellen Campbell); Terry Randall (Mary Lou Findley) who would rather be a nobody on the stage than a somebody on the screen. Judy Canfield is portrayed by Shirley Hutchison, hardboiled and cynical. Martha Lose plays Jean Maitland, whose movie success is the envy of the two inseparable friends, Big and Little Mary (Phyllis Balch and Mary Alice Dee). Bernice Niemyer is characterized by Mary Ann Hunter, the posing type. Others include Louise (Barbara DeVore) who marries a hometown boy in order to eat, while Pat (Nina Drake) taps her living in a nightclub; Mattie (Jean Hubler), the Bronx maid, heckles her slow, good-natured husband Frank (Charles Becraft). David Kingsley is portrayed by Manus Scott, the famous Hollywood producer, while Ted Burtis plays the part of Kieth Burgis, who gives up his stage ideals for screen fame. These characters plus a host of others made "Stage Door" a 4-star production. We also tip our hats to Miss Katheran Stoner who did a grand job of directing.



Mountie Music



● *First Row*: Marjorie Ruppelt, Martha Harlan, Jim Paulos, Alice Pillischer, Frank Ross, Bob McRoberts, Ruth Jolly ● *Second Row*: Barbara Brill, Gloria Hilf, Julie Randall, Richard Everline, Bob Klippel, Patricia Baum, Ruth Fields ● *Third Row*: Helene Schenck, Mary Louise Knight, Howard Bower, Dorothy Reinhard ● *Fourth Row*: Bob Manley, Jack May, Marion Landergott, Stephen Rice, Ed Colaianni ● *Fifth Row*: Don Keagy, Carolyn Cerna, Jim Nichol, Jim Champion, Stewart Champion, Bob Keene, Ralph Shibley.

Orchestra

Shakespeare saith that anyone who is not moved by beautiful music is capable of "treasons, stratagems, and spoils". (Merchant of Venice, Act Five—Speech by Lorenzo, for any of you Shakespeare fans who'd like to check up on it.) Shakespeare has got something there! At any event, there aren't any traitors skulking around our alma mater. Since "music hath charms to sooth the savage beasts", we "savages" ought to be soothed by now, for our orchestra of thirty-six members, with its "concord of sweet sounds", has as many charms as any other orchestra in this part of the country.

Do you remember how their beautiful music thrilled you at the class plays and graduation? Do you recall the select group that played for the operetta? Of course you do; who

could forget it? This year, the newest addition to the orchestra's program was their personal appearance at the Parent-Teachers' Association meetings. Lucky folks—those parents and teachers! We also favored the All State and District Orchestras with a delegation of our musicians.

This year the orchestra loses three members—Dorothy Reinhard, pianist of merit, Ralph Shibley, able trumpeter, and Bob Klippel, violinist, who leaves his post as concert master. The chief requirement for this position is ability, and for that reason, it will fall into the hands of James Paulos, for whom Mr. Mieser has high hopes.

Just as a closing vote of thanks to our orchestra, we suggest that the title of that certain song be changed to "I Like Mountie Music"!

Here Comes the Band

Rat-a-tat-tat! Rat-a-tat-tat! Here comes the band! Snappy looking bunch, aren't they, in their blue and gold uniforms? Don't you love those capes? Look at that drum major whirl his baton and that little fellow puffing on his big horn!

There they are—eighty-two lads and lassies. If you go to any of our football games, you'll see them. So a season ticket is a good investment even if you don't enjoy football, for the band adds a lot to the spirit of the games with its music, cheering, and entertainment between halves. Furthermore, we lucky people are favored with a band concert every May led by a famous conductor. Speaking of concerts, our band is always represented by a goodly number of contestants in the All State and District Bands.

This year the Band loses Kurt Meuschke and Chris Bauer, trumpet virtuosos, and Steve Rice, master of the tuba—all mid-year graduates. In the spring we send out for music laurels elsewhere, Ralph Shibley, likewise a trumpeter, Bob Davis, drum major and bass clarinetist, and Mary Meyer, alto clarinetist.

Director A. S. Miescer reports, much to the satisfaction of the jitter-bugs, that his group of musicians is loosening up to a little swing. This is not because our band has formerly been backward or reserved, but simply because such music has not hitherto been published for bands.

Rat-a-tat-tat! Rat-a-tat-tat! Our parade passes and here we are still wondering, "What does the Marine Band have that our band doesn't have?"

● *First Row*: Betty Lu Moreland, Bob Davis, Dick Russon, Ruth Rice ● *Second Row*: John Johnson, Dick Hogsett, Frank Susco, Jim Goldaine ● *Third Row*: Martha Harlan, Thalia Meyer, Jim Champion, Stewart Champion, Jack May ● *Fourth Row*: Bob Starling, Roger O'Connor, Bill Bucher, Helene Schenck, Don Denkle ● *Fifth Row*: John Hannon, Marion Landergott, Erroll Dexter, Mary Meyer, Stephen Rice ● *Sixth Row*: Bill Baker, Rolla Miller, Patricia May, Bill Fee, Don Keagy ● *Seventh Row*: John Magnus, Harry Herlinger, Robert Nagel, Bill Douglas, Chris Bauer ● *Eighth Row*: Ralph Shibley, Ross Smith, Robert Manley, Tom Leathers, Ed Colaianni ● *Ninth Row*: Grant Evans, Jack Eishenberg, Martin Arden, Florence Gregory, Betty Jane Paulson ● *Tenth Row*: Bob Keaney, Alice Means, Harold Taylor.



Music Hath Charms



Senior High Glee Club

● *First Row*: Vincent Lascheid, Eleene Rearick, Ellen Campbell, Luciann Isham, Emily Fergus, Phoebe Vittor, Jane Wheeler, Helen Fetterman, Miss Marjorie Cribbs, Barbara Hesse, Louise Campbell, Grace Wild, Dorothy Stauff, Lenore DeWall, Martha McFall, Mary E. Mershon, Lawrence Rank ● *Second Row*: Mary Catherine Dwyer, Ruth Conaway, Dorothy Greiner, Helen Jane Hibbs, Mary Jane Kenan, Irmairie Scheuneman, Jeanne Everhart, Elspeth Jordan, Margaret Say, Nancy Stanier, Margaret Martsof, Margaret Osborne ● *Third Row*: Betty Kough, Ruth Rice, Jean Post, Margaret Lawrence, Ruth Means, Barbara McClain, Betty Lacy, Ruth Love, Betty Jean Proctor ● *Fourth Row*: Irene Maloney, Gertrude Hutton, Ruth Templeton, Jean Dawson, Nancy Osbourne, Charlotte Schultz, Dorothy Gaites, Barbara Bacon, Priscilla Tite, Jean Phillips, Natalie Cole ● *Fifth Row*: Bob Dawson, Jack O'Brien, Don Creed, Jim Goldaine, Don Ramsey, Bob Lindsey, Ed Sweet, Jack Wilson, Jack Manheimer, Norman MacDowell, Douglas Baird, Bob Keene, Philip Weisel, Joe Piraino.

Junior High Glee Club

● *First Row*: Dorothy Brill, Natalie Leech, Charlene Hood, Elizabeth Fee, Patty Wiggins, Vincent Lascheid, Bob Keagy, Miss Cribbs, Bill Lascheid, Lawrence Rank, Ted Ramsey, Roger O'Connor, Pearl Shapiro, Adriane Handel ● *Second Row*: John Clark, David Smith, Sally Lou Connor, Betty Shakespeare, Kathryn Glenn, Shirley Nelson, Jean Watson, Maxine Acosta, Mary Friday, Jean Linnert, Dorothy Deutsch, Annett Francis ● *Third Row*: Barbara McCandless, Louise Whitcomb, Anne Brown, Edna Wood, Helen Duling, Mabel Poster, Ruth Rice, Emily Fergus, Geraldine Barrett, Jean MacLean, Inger Arnesen, Betty Madden, Elsie Arnesen, Anne Elizabeth Haynes ● *Fourth Row*: Bernice Harris, Rosemary McNamara, June Black, Evelyn Burtis, Jean Ellen Stewart, Carol Waechter, Barbara Bacon, Minnette Fritts, Lois Horning, Betty Rank, Jean Jordan, Ruth Ann Love, Laura Turner.



Glee Club

Cares abandoned for one period, student music lovers (?) crowd into room 308 every Friday to loosen up their vocal chords. Any sounds emitting from said room are really sincere efforts on the part of all concerned. Of course, Miss Cribbs, the director, and the warblers are the only ones who

realize the work connected with learning those classical and semi-classical songs, but do they love it!

It has been said that "music hath charms." Our student body agrees, for the Glee Club rates high among our school activities.

Operetta

On February 23 and 24 a great number of important events occurred throughout the world! I hope the foregoing piece of news will not prove too startling for us educated Lebanonites. Let it be known, however, that the presentation of "Les Cloches de Cornwall" under the direction of Miss Cribbs ranked high on this list of events.

Sitting in the Washington auditorium on these nights, we saw a little French village of the 17th century unfold before our eyes. We were entranced by the light, fanciful music, and the picturesque costumes of the choruses. The knee breeches just did something for the boys (we don't know what), while the long, full skirts, the bodices, and the French caps of the girls gave them the appearance of having arrived from Normandy on the last boat (17th century boat, of course).

Margaret Lawrence made herself well-known by her portrayal of Germaine, a sweet young maiden. Tossing her head high, Martha McFall enacted the part of Serpolette, the village vixen. Don Ram-

sey, having aged very suddenly, limped on the stage as the miser Gaspard, old and broken by his worries and miserly ways. Norman MacDowell set the fashion for 17th century French royalty in his role of Count Henri. Keeping guard in front of the ghost-inhabited castle was Jack Manheimer. His protecting suit of armor caused him some embarrassment and also some giggles from the audience when the leg piece unloosened and stuck out grotesquely. Ed Colianni, though he was entertaining a bad cold, entertained the audience as a flighty provincial governor.



First Row: Irene Maloney, Nancy Stanier, Luciann Isham, Mary Ann Hunter, Jane Wheeler.
Second Row: Ed Hastings, Bob Rick, Jesse Hill, Ira Matheny, Douglas Baird.



Alpha and Beta Sweethearts



● *First Row*: Mary Jane Kenan, Audrey Phillips, Peggy McElroy, Lenore De Wall, Lois Woodburn, Louise Wild, Kitty Riffle, Jeanne Condit, Edna May Johnston, Grace Wild, Marilyn Cavanagh, Sally Runyon, Eleene Rearick, Eileen Hilf, Louise Campbell, Pattie Findley, Helen Stafford, Lois Stuckeman ● *Second Row*: Martha Lose, Ruth Watson, Marjorie Weatherwax, Ann Markey, Margaret Mellott, Doris Hopkins, Jean Hosick, Betty Lee Keane, Peggy Greulich, Phyllis Balch, Betty Grubbs, Madeline Wheeler, Jane Wheeler, Betsy Ann Plank, Mary Campbell, Beryle Vincent, Susann Powell ● *Third Row*: Helen Jane Hibbs, Marie Wetzel, Betty Dietrich, Emily Delach, Jacqueline Young, Marjorie Parke, Dorothea Barto, Nancy Stanier, Betty Fleckenstein, Patty Lou Adam, Betty McKee, Mary Louis Haynes, Jane Beecraft, Irmalie Scheuneman, Virginia Powell ● *Fourth Row*: Ruth Conaway, Louise Nichol, Gertrude Hutton, Bette Erisman, Grace Judge, Jean Post, Virginia Heron, Janice Cooper, Ellen Campbell, Charlotte Schultz, Ann Simmons, Margaret Martsolf, Betty Beam, Martha Harlan, Ruth Jolly, Priscilla Tite, Annie Lou Duncan, Betty Jane Samuels ● *Fifth Row*: Peg Taylor, Elizabeth Abbott, Sally Gehrett, Nancy Osbourne, Eleanor Schwager, Louise Rider, Jean Juergens, Jean Wyre, Nancy Morrison, Leona Betz, Billie Jean Huber, Pat Denhart, Grace Haller, Virginia Raeder, Gene Donelson, Lois Lichtenthaler, Shirley Massick, Louise Brown, Ruth Templeton.

Girl Reserves

"We are the Girl Reserves!

We are the Girl Reserves!"

And by this boisterous evidence of our loyalty, everyone in Washington School knows that one of the bi-monthly meetings of the Alpha and Beta Girl Reserves is in full swing.

The meeting always opens with a poem or thought by the Devotional Committee. After the business is cleared away by Eddie Johnston or Kitty Riffle, fall and spring semester presidents respectively, we lustily exercise our vocal chords on some favorite camp or college song.

Finding the members' voices hoarse, the program committee introduces the speaker of the evening. The guests this year included Miss Miller, Dr. Bennett, and Dr. Ferguson, who

talked on health.

By the time the speaker's knowledge has been exhausted by intelligent (?) questions, our vocal chords have recuperated from their previous strain and we troop out singing "We're on the Upward Trail."

This year the bulletin boards were frequently immersed in posters (copyrighted by the Publicity Committee), which announced the Fruit Hop by such witticisms as "Orange a date and come!" Two other successful dances staged by the Social Committee proved quite popular.

Under the leadership of Miss Taylor and Miss Froese, the Girl Reserve Organization this year has increased its membership and has had an active social program.

Knights of Mt. L

Boys' Hi-Y

This group of handsome young gentlemen (Ahem!) comprise the officers and members of the Mt. Lebanon Hi-Y, boasting to be one of the largest and most active clubs in the school (repeat Ahem!). This quite exceptional group has been guided this year by two new arrivals on Mt. Lebanon's teaching staff—the smiling and genial Mr. Saxton, and the capable and energetic Mr. Mollenauer.

But about the organization itself: As the protege of Mr. Brown, the Hi-Y sprang into the limelight in 1937. When on home ground, the boys are entertained by a variety of speakers, and also indulge in moving pictures. An athletic program, fervently initiated this year, gained many followers into the organization. The boys made the breakers roar at the Y.M.C.A. swimming pool. Out-

side the home gate, the fellows visited Mother Nature in her natural surroundings (hikes in less flowery language—excuse pun). In addition, the club gained culture at the Art Exhibit, absorbed technical knowledge at the Mellon Institute, and star-gazed at the Allegheny Observatory. A trip to the University of Pittsburgh impressed the Hi-Y's as well as those students who observed their intelligent faces.

For the fall semester the authority of office was vested in the following: Jack Cargo, President; John Goldthwait, Vice President; and Dan Hilf, Secretary-Treasurer. After the January ballots were cast, Glenn Heck took over the Presidency, Henry McCall became Vice President, and Don Gardiner seized the Secretary-Treasurership.

● *First Row*: Frank O'Hara, Douglas Baird, Don Gardiner, Glenn Heck, John Goldthwait, Nick Valicenti ● *Second Row*: Howard Alderson, Ira Matheny, Paul Shanor, Jack Ballard, Fred Ulam ● *Third Row*: Dick Horning, Jack Rothman, Jesse Hill, Henry Massick ● *Fourth Row*: Jack Southworth, Harry Wight, Tom Ulam, Bill O'Connor, Jack O'Brien, Mr. Saxton ● *Fifth Row*: Bob Trueblood, Judd Jenkins, Tom Shields, Bill Housley,



Hobby Lobby



Kodak
Chess



Nature Study



Slide Rule
Chemistry

KODAK CLUB

Now photography is just their line,—to take and print and view;
In fact, the pictures turn out swell,—just so they're not of you!

CHESS CLUB

Your move! And then you're baffled by the spot he's got you in.
Your fault in playing Chess Club men—sticking out your chin.

NATURE STUDY CLUB

In nature lore and cannibals their minds all register.
My own opinion still prevails, my coat could use that fur!

SLIDE RULE CLUB

And here's the lazy element of Algebra; they say,
They multiply by "sliding rule",—it's easier that way!

CHEMISTRY CLUB

And Chemistry's just the place our "scholars" mix and pour,
The simple little acetates and H_2SO_4 .

GYM SKILLS CLUB

"London bridge is falling down"—or,—it will be in a minute.
This gym skill lasts three seconds flat,—
That's just about their limit!

PING-PONG CLUB

That's Jack, the Mounties' racquet star, all grinning to the finish,
But ping-pong's just a bit too deep! he'd better stick to tennis!

ARTS AND CRAFTS CLUB

A "crafty" bunch we show you here, a-hammering away,
At least they have things when they're done;
That's more than we can say.

RADIO CLUB

I used to think all radio a benefit no end,
When now they sign off MTL, my sentiment's—amen!

Gym Skills
Ping Pong

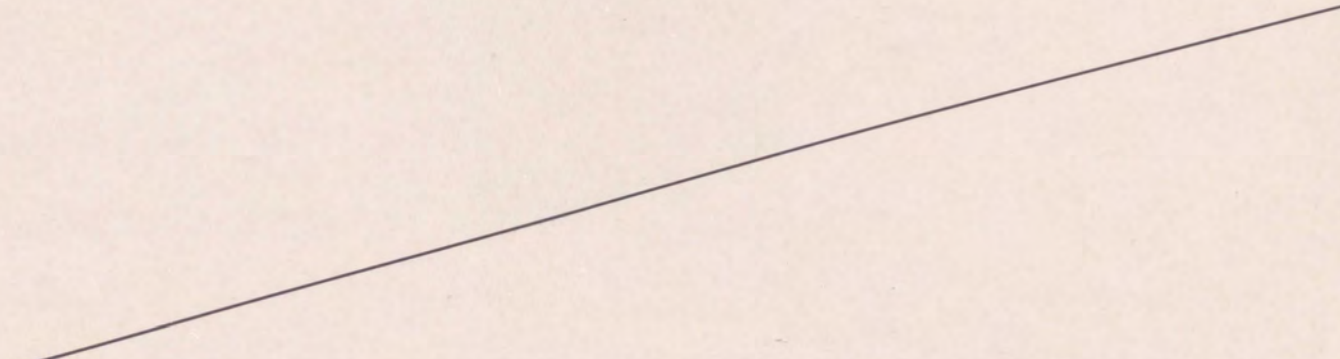


Arts and Crafts
Radio



Art Miss Harling
Basketball Rules Mr. Simpson
Cartoon Miss Caldwell
Checkers { Miss Beck
 Mr. J. Fisher
 Miss Frobese
 Mr. Gilbert
Cheerleaders Miss Hindman
Chorus, Sr. Miss Cribbs
Chorus, Jr. Miss Neumarker
Dramatic { Miss Jordan
 Miss Stoner
Driving Mr. Sisson
Fencing Mr. Konvolinka
Foreign Correspondence . Miss Zahniser
Hostess Miss Fish

Mechanical Drawing ... Mr. Anderson
Puzzle Miss Smith
Quarterback Mr. Luecht
Referees Mr. Schade
Rifle Mr. Streams
Service Miss Gordon
Scrap Book { Miss Campbell
 Miss Maguire
Soccer Mr. Peterson
Sports { Mr. Glafka
 Mr. Brown
 Mr. Hogg
 Mr. Doak
Stamps Mr. Ford
Style Miss Miller
Typing Miss Kerr



On the fourth leg of our skyway journey we are attracted by a great uproar. Sensing adventure we descend into an arena where we find a football suddenly hurled into our hands. After our presence is detected by the referee, we are escorted to the bleachers, only to join in yells of "Clip him and mow 'em down," "Hold tight---don't let that man get away." Some kind soul graciously informs us that if we wish to remain in the arena over the winter months, we shall also be privileged to view basketball games, wrestling matches, and track meets. Elated by this choice bit of information, we prepare to remain for the aforementioned sports.



ATHLETICS

Touchdown!



● *First Row* : Harold Langstaff, Bob Marmion, Ed Cipriano, Ed Hamilton, Dave Boyd, Bill Campbell, Joe Donahoe ● *Second Row* : Murray Potts, Manus Scott, Warren Vieth, Bob Whitelock.

All Americans

"Mt. Lebanon was represented by an All American team this year," claims Coach Luecht. He had reasons to make this statement, for these eleven seniors were some of the finest fellows Mt. Lebanon has ever produced. Everyone enjoyed clean, wholesome entertainment and participated in many other activities. Scholastic standing was no drawback to these boys, for they never had to sit out a game. Without this qualification and their athletic ability the Blue and Gold could not have been victorious in the toughest schedule ever played by the Blue Devils.

Coach always had a good word to say about each player. He often remarked that the boys never missed a practice session unless they were physically disabled. There was an exception, however, in Manus Scott's case, because Manus was unable to arrange a more suitable date for the birth of his calves!

Teamwork was an outstanding characteristic in the Mounties' success. The dependable blocking by Murray Potts, Dave Boyd, and Ed Cipriano was never lacking. When swivel-hipped Whitelock or Vieth got

loose, it took six men to bring them down. Bobby Marmion, Joe Donahoe, and Bill Campbell's opponents knew they were playing with dynamite when they attempted a line smash. Speaking of defense, we ought to mention Eddie Hamilton's stalwart backing up of the line. An opponent never got far if he ploughed through Eddie's side of the line. Warren Bernhard turned in a splendid record for his first and last year of *A* squad football at Mt. Lebanon. Hap Langstaff held down the other end, which was a difficult task for a little fellow five and a half feet tall. The punting staff, made up of Marmion and Langstaff, was sufficient to keep the team out of danger.

Some recognition is due to the second team of the "All American" outfit. When you consider that the second team played three quarters of three games, they showed that they had some of the "All American" form.

Coach Luecht was justified in calling his boys "All American," for nine of the eleven players were offered college scholarships.



“A” Squad Football

● *First Row* : Bob Whitelock, Warren Vieth, Dave Boyd, Murray Potts, Ed Cipriano, Bob Mar-
 mion, Hap Langstaff, Joe Donahoe, Ed Hamilton, Manus Scott, Jim Turner, Bill Campbell ● *Sec-
 ond Row* : Jack Ballard, Roy Brahm, Al Copetas, George Donahoe, Bill Baker, Paul DeBenedictis,
 Jack Alderige, Walter Bloom, Dutch Frank, Bob Hugus ● *Third Row* : Lee Ferrell, Dick Grant,
 Hughie Williams, John Clapperton, Roy DeLonga, Tom Hooper, Dick Knowlson, Ed Hamel, John
 Matragas ● *Fourth Row* : Manager Gordon Stewart, Manager Ed Campbell, Manager Dick Horning,
 Manager Al Lammert, Coach Luecht, Ass't Coach Simpson, Warren Bernhard (absent).

Mt. Lebanon—28 Washington—6

In the estimation of any Mt. Lebanon fan, the game with Washington was the most thrilling battle of the season. Manus Scott piloted his teammates through to a 28 to 6 upset for Washington. This season closed Scott's four year football career for the Blue and Gold. As a passer, runner, and a leader in the game, Manus was hard to beat.

Mt. Lebanon—0 Donora—14

“Too bad” were the words used to describe the Donora game. Even though we came out on the tail end of a 14 to 0 tally, there were a few fellows who performed in true style. Eddie Hamilton, who was outstanding throughout the year, did his best to stave off the attack. The night before the game, Eddie tore a ligament in his knee, but nevertheless, he played one of his best games.

Mt. Lebanon—19 Swissvale—0

Mt. Lebanon opened this year's football season with a bang by defeating Swissvale to the tune of 19 to 0. Harold Lang, who was injured in the second game, tallied two of the three touchdowns. Lang's hard line-smashing and powerful drives were missed greatly after the Aliquippa game.

Mt. Lebanon—33 Aliquippa—13

Our first home game resulted in a 33 to 13 victory over the powerful Aliquippa “Bull Dogs”. No matter how hard they tried, Aliquippa could not get by our two little hundred fifty-five pound guards, Eddie Cipriano and Dave Boyd. Dave and Ed did not receive much publicity during the season, although they had to do a lot of the dirty work.

Touchdown!

Mt. Lebanon—12 Turtle Creek—0

Turtle Creek, last year's W.P.I.A.L. class AA champions, caused plenty of trouble for the Mounties although the score was 12 to 0 in our favor. Warren Vieth, who took over Lang's job at fullback, proved very satisfactory. Warren's speed and shiftiness were a great aid to Mt. Lebanon. Scoring one of the two touchdowns and assisting on the second, assured him of a starting position.

Mt. Lebanon—38 Crafton—0

Because of our heavier team and because of rain which poured down throughout the game, Mt. Lebanon had an advantage over Crafton this year. A score of 38 to 0 was brought about by the splendid performance of our two tackles, Marmion and Campbell. The size of both of these boys, along with Joe Donahoe, made up for what any other man on the team lacked. All three men were good on the defense because of their weight.

Mt. Lebanon—38 Dormont—0

Great satisfaction was gained in running Dormont into the ground 38 to 0. The Red and Gray were unable to stop little Bobby Whitelock, who twisted and squirmed his way to two scores. Whitey has been handicapped by injuries for the past two years, but he made up for this in the Dormont fray.

Mt. Lebanon—20 Langley—0

Langley proved to be an easy game for the Mounties as shown by the 20 to 0 outcome. Warren Bernhard proved to the fans that he could really snag passes. He completed three out of four and romped for a touchdown. Murray Potts took over Jack Fischer's position in grand style this year. When Murray blocked those ends they were out of the play. He paved the way for the backfield to win the Blue Devils' fourth consecutive game.

"B" Squad Football

● *First Row*: Manager Bob McEwen, Bill Reed, Tom McSteen, Mac Corner, Don Williams, Cy Ivory, Joe Hardy, George Dulabon, Bob Leech, Bill Longstaff, Ed Hutcheson, Bob Roberts, Charles Beecraft ● *Second Row*: Don Ramsey, Harry Murphy, Roland Sutherland, Ellsworth Harris, Duncan Brown, Ray Beatty, Red Hogsett, Harold Bucher, Jack Oehmler, Shorty May, Bob Wilkinson, Ellis Booker, Jack Shields, Bill Phillips, Warren Gorham, Charles Clarke, Bob Clarke, Asst. Coach Moltenauer, Coach Glafka ● *Third Row*: Mr. Fisher, Bob Lindsay, Dick Evans, Bob McCue, Bob Nixon, Bob Zima, Bob Baker, Ed Ryan, Tim Giles, Warren Martin, John Shaffer, Dick Mills, Ray Robb, Fred Krug, Bill O'Connor, Jack Ward, Creighton Murphy, Fred Hamilton, Bill Proctor, John Lewis, Fred Ulam, George Cruikshank, Bob Campbell, Tom Hopper, Bob Kirk, Bill O'Brien.





"C" Squad Football

● *First Row*: Roy Clark, Jack Neilson, Joe Stewart, John Ulam, Bill Eckenrode, Stephen Ward, Dick Curtin, Walter Snyder, Pem Nichols, Bob Ricker, Alvin Thomas, Bob Anderson ● *Second Row*: Dalton Rumberger, Steve Bleecker, Walter Kraber, Bob Edmundson, John Murphy, Paul Kernan, Pete Schroeder, Walter Schumm, Ed Happe, Dick Corbett, Jack Rees ● *Third Row*: Boyd Speaker, Chuck Haviland, Laird Kroh, Gene Smoot, Jay Arthur, Bill Perkins, George McCall, Junior Hardwick, Dave Woodworth, Bob Meneilly ● *Fourth Row*: Lester Warrenberg, Warren Edwards, Dick Businger, Glenn Butler, Bob Teasdale, Charles Casper, Bill Davis, Jack Crawford ● *Fifth Row*: Bob Barlow, Jack Long, Jim Finn, Jack Haller, Norman Wilson, Bill Arther, Charles Esgar, Bill Mower ● *Sixth Row*: Bob Seiferth, Vincent Joyce, Douglas Baird, Jim Duchene, Hully Giles, Coach Brown, Coach Peterson.

"B" Squad

This season, Mr. Glafka and Mr. Mollenauer developed one of the best sophomore junior teams in years. They experimented with a new system of forming a sophomore team and a junior team, which resulted in keener competition and provided more positions for fellows who otherwise would have warmed the bench. Mr. Luecht is obtaining many boys from this junior team for his varsity squad next season. Those fellows who showed in the games with the sophomores and in practice that they had what it takes will be the ones chosen for the "A" squad. Some of the sophomores who performed in excellent style by defeating the freshmen 26 to 0 and 27 to 0 will also be selected for the varsity. Mr. Glafka is well-noted for his ability in building up the boys' physical condition. The approaching football season will demonstrate the value of Mr. Glafka's and Mr. Mollenauer's training of the "B" squad.

"C" Squad

Other schools are perplexed over how Mt. Lebanon always produces such good football teams. The answer may lie in the fact that the boys start receiving training in the seventh grade. This past year Mr. Peterson and Mr. C. Brown have coached the freshman team. Their squad consisted of boys in the seventh, eighth, and ninth grades. Out of a hundred young boys, sixty-five were chosen for the squad. Although these boys were given hard work-outs each night, they always came back for more. After all, that's what makes good football players. The annual game with the sophomores proved very exciting this year when one of the eager freshmen ran the wrong way to score a touchdown for their opponents. Some future varsity material could be discerned in Wilson, Schroeder, Curtin, Smoot, Ward, Eckenrode, and Kernan.

Tisket a Tasket . . .



BASKET BALL VARSITY

First Row: Jack Rice, Tom Hooper, Joe Donahoe, Ward Duchene, Bob Whitelock, Al Copetas, Dave Young.

Second Row: Mgr. Henry McCall, Ed Hamilton, Warren Vieth, Romaine Andrews, Jack Shields, Ed Cipriano, Coach Glafka.

Basketball

Winning five games and losing once, the first half of the Section 8 basketball schedule proved encouraging for the Mt. Lebanon High School team. Taking half of their four pre-season basketball games, the Blue and Gold started the schedule by showing McKees Rocks, Carnegie, Crafton, Stowe, and Coraopolis, respectively, their ability on the floor, only to be downed by our Dormont neighbors. Ed Hamilton, who was one of the best cagers Mt. Lebanon has ever had on its basketball teams, played his last game at Dormont. To counter this loss, Ed Cipriano, now recovered from an arm injury, showed much improvement in his game.

The beginning of the second half of the season looked very black because Mt. Lebanon lost two tough overtime games, by the same score, to McKees Rocks and Carnegie. The

team seemed to settle down after this, for they won decisive victories over Crafton, Stowe, and Coraopolis, which helped to keep us in the upper bracket. After winning a non-league game, by 4 points, from the Western Pennsylvania Institute for the Deaf, the Mounties then took Dormont over the hurdles with a ten point lead at the end of the game. This brought Coach Glafka's boys into a three-way tie with McKees Rocks and Carnegie. In the play-off Mt. Lebanon encountered Carnegie on the McKees Rocks floor; and the winner, Mt. Lebanon, clashed with McKees Rocks at the Pitt Stadium.

For the season Andrews was high score man with Vieth, Cipriano, Copetas, and McMinn next in line. Congratulations to Coach Glafka for his work and his excellent coaching.

THE PLAYOFFS

At McKees Rocks: The Mt. Lebanon vs. Carnegie game was all Mt. Lebanon, as our boys started off the scoring with 7 straight points, Andrews tallying the majority. The half ended in our favor, 27—16. In the second half the Mounties increased

the margin and went on to a win of 58—34.

At the Stadium: Mt. Lebanon vs. McKees Rocks was a different story, as McKees Rocks got a 5 point lead and kept it most of the game. In the final quarter, however, they increased their lead winning by 46—35.

"A" SQUAD SCHEDULE FOR 1938-1939

OPPONENTS		Mt. L.
Washington	33	28
Westinghouse	26	28
Brentwood	28	22
Alumni	17	39
*McKees Rocks	25	49
*Carnegie	34	48
*Crafton	21	36
*Stowe	15	44
*Coraopolis	27	45
*Dormont	46	37
*McKees Rocks	34	32

*Carnegie	34	32
*Crafton	26	53
*Stowe	28	46
*Coraopolis	22	40
W. Pa. I. D.	45	49
*Dormont	37	43

PLAYOFFS FOR SECTION 8

Carnegie	34	58
McKees Rocks	46	35

* WPIAL Games.

"B" SQUAD BASKETBALL

Significant because of its future possibilities, the "B" squad polished up as good a scoreboard as the varsity this season. Consisting of boys from both tenth and eleventh grades, the squad basketed 13 wins and suffered 3 defeats. This year's luck made Coach Peterson believe in men-

tal suggestion, for a loss in a preliminary "B" squad game invariably made way for a varsity downfall.

Offering some excellent material for next year's "A" group, the highest hope of these boys is to make as fine a showing next season as their "Mountie" predecessors.

B SQUAD BASKETBALL

First Row: Pem Nichols, Jack Alderige, Lefty Davis, Ed Campbell, Bill Longstaff.

Second Row: John Lewis, Bob Clarke, Gordon Stewart, Bob Drake, Duncan Brown.

Third Row: Chan Ketchum, Dale Hamilton, Bill O'Melia, Ernest Giles, Jim Zook, Bob Hanna, Coach Peterson.



Footloose



● *First Row*: Lewellyn Botula, Warren Hoffman, Bob Nolle, Walter Snyder, Jim Turner, Sam Aston, Dick Conroy ● *Second Row*: Ray Beatty, Eugene Weber, John Buckey, Bob Crowell, Mike Cavalovitch, Bill Zewe, Bill Smith ● *Third Row*: Coach Peterson, Alex Luft, Harold Hammerstrom, Henry Renton, Harry Ammann, Bob Short, Bob Stutt, Joe Cavalovitch, David McRoberts, Tom Duff ● *Fourth Row*: Eugene McGinnis, Charles Dixon, Ted Buchek, Bill Abriatis, Dick Ritter, Ray Aitken, Bill Phillips, Charles Erikson, Floyd Lang, Ken Haughin.

Soccer

Soccer is a new spring sport in Mt. Lebanon High School, having been introduced for the first time in 1938. This sport was started to interest the boys who, having played it as members of independent teams, didn't play football and had a liking for soccer. Since its introduction more boys have

become interested and it has now a place on our major sports' program. This season's call was answered by a squad of forty boys, of whom, five were lettermen from last season, which makes our chances for a winning team quite slim.

● *First Row*: Don Brown, Angus McPhail, Douglas Anderson, Bill Porter, Bill Simmerman, Norwood Allen, Bill Ballon, Jimmy Cardarelli ● *Second Row*: Frank Southworth, Piersol Murray, George Carvlin, Pete Schroeder, Dean Copetas, Charles Seghers, Fred Ulam ● *Third Row*: Earl Cullison, Calvin Hart, Tom Carr, Ralph English, Al Lammert, Joe Stewart, Jim Beam, Bill Hall, Fred Hamilton ● *Fourth Row*: Norman Wilson, Bernard Flanigan, Tom Ulam, Cleland Nelson, Jim Ryland, Paul Vieth, Ross Smith, Bill Arther ● *Fifth Row*: Karl Sittler, Bill Pritchard, John Claperton, John Matragas, Ellsworth Harris, Bill Udischas, Jim Culton ● *Last Row*: Bill Housley, Clark Hogsett, Harry Murphy, Charles Clark, Bob Faloon, Murray Potts, Larson Brown, Harry Wight, Ira Matheny, Bob Quigg, Ted Burtis, Rolla Miller, Jack McGovern, Eugene Matthews, Dick Lapham, Bill Wick, Don Creed.



Hold Tight



First Row: Jack Rees, Tom Hopper, Don Williams, Bob McElroy, Wallace Coyte, Hobart Chivers, Cyril Ivory.
Second Row: Glenn Heck, Dave Stoner, John Dapper, John Frank, Harry Benz, Bob Quigg, Stan Shepard, Norman Elliott.
Third Row: Charles Shaffer, Dave Boyd, Murray Potts, Eugene Matthews, Roland Sutherland, Roy De Longa, Bob Marmion, Coach Mollenauer.

Wrestling

The Mt. Lebanon grapplers opened their season against Carnegie on the latter's home floor. The most exciting match of the evening was Bobby Marmion's, which seemed like a regular professional match. Bobby lost the match finally on a time decision to Carnegie's heavyweight. Mt. Lebanon next was host to Dormont brushing them off in a close match 14—11. As guests of Shady Side, they thoroughly whitewashed the Academy Boys 28—0 to increase their winning streak to two. Meeting Carnegie in the big Gym the matmen again trimmed the Black and Orange 24—5. Wally Coyte, representing Mt. Lebanon in the 105 pounds class, although he tore his shoulder ligaments, went on to pin his man. Coyte was lost for the rest of the season due to

this injury. The last match of the season, against Kiski, was taken by our own wrestlers 24—6 to give them a perfect season with five wins and no defeats.

The W.P.I.A.L. play-offs were held in Waynesburg, March 10-11. Coyte, his wounds having healed, was caught in an epidemic of flu and was unable to go. Bob Quigg, Glenn Heck, Dave Boyd, Harry Benz and Stan Shepard represented Mt. Lebanon in the play-offs.

The team felt the loss of "Hap" Langstaff and Paul Getty in mid-year graduation; however, Dave Boyd and Harry Benz filled their positions very well indeed. Wally Coyte, Harry Benz, Dave Stoner, and Roland Sutherland, will probably be back to make the first team next year.

SCHEDULE		Mt. L.	Opp.
Mt. L. vs. Carnegie	away	19	3
Mt. L. vs. Dormont	home	14	11
Mt. L. vs. Shady Side	away	33	0
Mt. L. vs. Carnegie	home	24	5
Mt. L. vs. Kiski	home	24	6

Modern Achilles



First Row: Jack Manheimer, Bob Seltman, Norman Elliott, Glenn Heck, Bob Whitelock, Paul Getty, Howard Alderson, Jim Brady, Bob Campbell.
Second Row: Bob Lawrence, Paul Shanor, Jack Shields, Bob Knowlson, Don Lewis, Salvator Bellini, Dan Robb, Ed Hamilton, Bob Hanna, Bill O'Melia, Charles Fetterman.
Third Row: Manager Beverley Lewis, Bud McGlaughlin, Henry McCall, Ed Hamel, Roy DeLonga, Coach Sisson, Joe Donahoe, Coach Glafka, Manus Scott, Harry Benz, Bert Brooks, Jack Aldridge, Walter Brown.

1938 Track

Activity in the early spring months of last year developed an outstanding track team for Mt. Lebanon High. Mr. Sisson and Mr. Glafka came through with more lettermen than in any previous year. All of these fellows worked hard during the spring months to perfect an unusual record.

Lettermen included Lewis, Alderson, Hamilton, Bellini, Robb, Whitelock, Heck, Campbell, Brady, Getty, McGlaughlin, Shields, Donahoe, and O'Melia. A great deal of recognition is due these sprinters and field men.

Alderson performed in regular style this year in the 100 and 220 yard dashes. Hamilton's first year as a trackman proved very successful, for he ran one of the fastest half-mile distances in the school's history. A real trackman who has broken the tape in many races is little Bobby Whitelock. Whitey and Robb have upheld the Mounties' relay team record for the past three years. Any

boys filling their vacancies must do some fast stepping. Brady and McGlaughlin showed they had what it takes when the last hundred yards lay before them.

Mt. Lebanon gained about twenty points in every meet this past year through the efforts of Heck, Campbell, Donahoe, and O'Melia, in field events. Don Lewis did his share in aiding the Blue Devils on to victory. He ended his track career by breaking the W.P.I.A.L. discus record. In the javelin throw, Mt. Lebanon was represented by Bellini, while the job of scaling the bar was handled very efficiently by Heck and Campbell. Several fellows attempted to put the twelve pound shot, but it took Donahoe and O'Melia to show them how. Several of these fellows will be performing this year under the leadership of Coach Mollenauer, who has recently given up his track post at Cannonsburg.

Mt. Lebanon	67½	Brentwood	52½
Triangle Meet—Mt. Lebanon	34½	McKees Rocks	62
Mt. Lebanon	55	Dormont	12½
Mt. Lebanon	78½	Bellevue	63
Mt. Lebanon	59	Crafton	25½
District Meet—Mt. Lebanon	10 points.	Sewickley	41

Racquet Busters

Tennis

1938 initiated Mt. Lebanon's first year in W.P.I.A.L. tennis competition, which limited our opponents to the public high schools. Again winning its section, Mt. Lebanon kept up its record of eight consecutive years. Having entered the sectional playoffs, we were unexpectedly overthrown in the second round by Duquesne, 3 to 2, marking the fourth time in eight years that the Blue Devils failed to win the championship.

The Mounties also figured prominently in three other scholastic tournaments, sending George Blank, and Captain Jack Southworth, leader of Mt. Lebanon's tennis forces for the past three years, to the Shadyside Interscholastic in May, the Pittsburgh Interscholastic in June, and the well-known Harvard Cup tournament in September. Mt. Lebanon garnered two of the three championships, with Southworth winning the Shadyside and Harvard Cup tournaments, and reaching the finals of the Pittsburgh Interscholastic.

Other members of the Mounties' fine tennis team included number two man George Blank, who completed a

commendable record of six wins and three losses for his Senior year; Jack O'Brien in the third position, who not only did creditable work in actual league matches, but also won the Pittsburgh Interscholastic Doubles Championship along with Southworth. Eddie Cipriano, better known as a standout performer on the Blue Devils' football and basketball teams, turned in a fine job as fourth man, contributing vitally to one of the Mounties' two points in the play-offs; and Charles Roberts, a freshman, who looks like a "comer" on future Mt. Lebanon tennis teams, held down fifth place.

1938 TENNIS SCHEDULE

Mt. L. 7	Arnold 1
Mt. L. 5	Bridgeville 0
Mt. L. 3	Crafton 2
Mt. L. 4	Carnegie 1
Mt. L. 3	Arnold 3
Mt. L. 5	Bridgeville 0
Mt. L. 3	Crafton 2
Mt. L. 5	Carnegie 0
Mt. L. 2	Duquesne 3
(Playoffs)	

Won 7; Tied 1; Lost 1.

● First Row: Jack O'Brien, Jim Winn, Ed Cipriano ● Second Row: Coach Doak, Matt Reynolds, Jack Southworth, George Blank, Elma Brooks.





● Left to Right: Coach Peterson, Harold Crowell, Jack Livingston, Bill Kramer, Bob Zwinggi, Bill Tattersall.

Golf

With the St. Clair Country Club as its home course, the 1938 Golf Team did not fare so well against its foes during the W.P.I.A.L. golf season. Final scores showed 2 wins for the St. Clair boys and 4 for their opponents. Yet these scores do not record the fine fighting spirit of Kramer, Zwinggi, Tattersall, Livingston, and Crowell who composed the first team. Each individual match was close and showed that the boys from the Mount could, and did play serious golf. Not often does a team that loses the majority of its matches outscore its opponents as Mt. Lebanon did with a total of $45\frac{1}{2}$ over $44\frac{1}{2}$ for its foes.

The W.P.I.A.L. section included Bridgeville, Coraopolis, Snowden, and Mt. Lebanon. The Mounties opened the season against Coraopolis at Bon Air Country Club, winning the match 11 to 4. Snowden and Bridgeville

took the measure of Coach Peterson's five in the next two matches, 11 to 4, and 8 to 7 respectively. Still determined, the team as host to Coraopolis, whitewashed them $14\frac{1}{2}$ to $\frac{1}{2}$. Again in the next two matches, Snowden and Bridgeville nosed out our "divot-diggers". The defeat by Bridgeville brought to an end a sad season.

At the close of the season, Bill Kramer and Bill Tattersall, representing Mt. Lebanon in the W.P.I.A.L. championship playoffs at Greensburg Country Club, were eliminated in the first round with medal scores of 84 and 89 respectively.

The Golf Team for 1939 loses its five first-team men of the '38 team. Mr. Saxton, the new coach, will have only two reserves from last year's squad around whom to build his 1939 team.

1938 SCHEDULE

		MT. LEBANON OPPONENTS	
Apr. 19	Mt. Lebanon at Coraopolis	11	4
Apr. 20	Snowden at Mt. Lebanon	4	11
Apr. 26	Mt. Lebanon at Bridgeville	7	8
May 3	Coraopolis at Mt. Lebanon	$14\frac{1}{2}$	$\frac{1}{2}$
May 6	Mt. Lebanon at Snowden	$3\frac{1}{2}$	$11\frac{1}{2}$
May 10	Bridgeville at Mt. Lebanon	$5\frac{1}{2}$	$9\frac{1}{2}$
Total		$45\frac{1}{2}$	$44\frac{1}{2}$

Musketeers



First Row: Bill Stout, Paul Shanor, Bob Campbell, Carl Fischer, Ira Matheny.
Second Row: Mr. Streams, Jim Reddy, Harold Bucher, Ed Charnell, Ed Hutcheson, Jim Dawes.

Rifle Team

Coached by Mr. Streams, the Rifle Team had a fairly good season, winning five out of nine shoots. After two victorious matches with Tarentum, the team bowed in defeat to Etna. In the fourth match Millvale played host to our Sharpshooters, only to be beaten 965-962. With revenge in their hearts Mt. Lebanon

sought to even the score with Etna, but without success, since we wound up on the short end of a 992-975 score. Getting back into their stride on home territory, the Mounties took the next two matches from Millvale and West View. The two final matches with Turtle Creek were lost by a close margin.

Fencing Team

The only big match this season for our fencing team is the Greater Pittsburgh Fencing Tournament, which will be held in the Pitt Stadium on the evening of April 17. Schools from all over the Pittsburgh district are to be represented by their best fencers. These schools include: Mt. Lebanon, Wilkinsburg, Langley, Bellevue, Ben Avon, Dormont, and Westinghouse. Individual and team trophies will be awarded to the winners. Mr. Konvolinka's squad is to consist of Bob Hance, Jack Dragonette, C. J. Donoghue, Carl Betz, Al Ruth, Errol Dexter, and Bob Charters the latter

having made a name for himself by winning the Class "C" championship last year in a tournament held in our gym.

Ken Metivier, Bob Charters, Mr. Konvolinka, Jack Dragonette, Albert Ruth.



A Sport for Every Girl



● *First Row*: Margaret Brown, Margie Hammerly, Jane Mensch, Glenys Mechem, Elaine Alexander, Marjorie Little, Jean Angle, Nancy Lee Nicklas, Peggy Kuehner ● *Second Row*: Eunice Smith, Mary Casper, Betty Haynes, Connie Hatton, Mary Conaway, Thalia Meyer, Maxine Acosta, Miss Krugh ● *Third Row*: Margie Anderson, Margaret Stahlnecker, Rosemary Kearfott, Jane Cramer, Geraldine Barrett, Alice McMaster, Grace Judge, Ann Simpson, Margaret Osbourne ● *Fourth Row*: Jeanne Hast, Lois Stuckeman, Suzanne Crawford, Anne Charters, Betty Shaffer, Jeanne Linn, Mary Dee, Miss McDonald.

Girls' Athletic Association

Tweet! Tweet! the sound of that whistle and the sight of girls clad in blue or gold proclaim the start of another sport offered by the Girls' Athletic Association. In early fall this sport is hockey. The turn-out for this game is large, and there are always a few bystanders waiting for someone to be cracked on the shins. These cracked shins, in fact, any casualties, are taken care of by an insurance plan.

This year over six hundred senior high girls took advantage of the wide selection of sports. But why not, when basketball, mushball, soccer, tennis, cage ball, horseshoes, badminton, volley ball and tenikoit are offered? In these sports, the girls are awarded their athletic letters.

Each season closes with a better sense of cooperation, competition, and a deeper understanding of "Ask not if you won or lost, but how you played the game."

CHEERLEADERS

Cheerleaders

Margaret Martsolf, Mary McCollum, Shirley Hess, Audrey Phillips, Marjorie Hall, Marjorie Kraber.

Fame came "truckin' on down" home this year as the jitterbugging of our cheerleaders brought acclaim, even from Dormont! National interest focused on Mt. Lebanon High, while all eyes watched the girls shaggin' through "Eeena-dicka, Teena-dicka" and other "catches". Like the team, the cheerleaders checked up victories, too, and helped make our best athletic season; in fact, the varsity just "wouldn't know what to do without 'em"!



and Every Girl a Sport

Basketball

Captains appointed, teams chosen, feeling running high, friendships for the moment forgotten, and you have the essence of basketball. A popular sport, it draws great crowds of bystanders, who are themselves carried away when the "old bouncer plops into the basket". Even at five o'clock the gym is filled with the din of anxious "pep-talks", rapid-fire orders, and such "sleight-of-hand" passing that baffles even the referee. Notre Dame (not to be confused with football!) nosed out Carnegie Tech and Duke to fly the victory colors at the close of the scheduled season. Surviving under losers' bitter disappointment and the common complaint of "Lookit my hair! Drippy!" it is certain to remain the favorite for many years.



GIRLS' BASKETBALL

Jeanne Hast, Theresa Nolte, Phyllis Schumm.

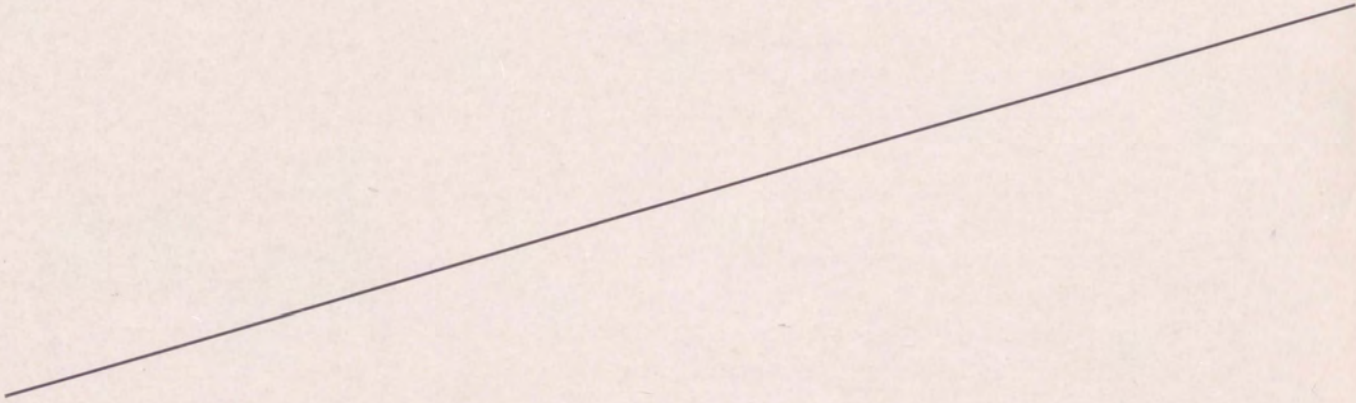
Archery

Have you noticed the cracked windows in the girls' gym? Some of our aspiring young Robin Hoods missed the target. Archery is open only to twelfth grade girls, and this year there were more participants than ever before. Some of us wondered just how one went about hitting a target. After several instruction periods our aim improved, and by the time the tournament was held, all were at least hitting the same wall on which the target was placed. In order to remain in the competition, ten points had to be scored in the fourth round and an additional five points in each succeeding one. Exhaustion claiming the ninth and final round, the champion drew her last bow and left the field open to *Little John*.

ARCHERY

Lois Lichtenthaler, Betty Jane Dietrich, Betty Jean Proctor.





During our exploration of the hills of Lebanon; we become acquainted with many of its inhabitants. Keeping in touch with their daily life, we learn of the strange doings, which prove so bewildering to our group of scholarly folk.

But since there remain other lands to be traveled, we must bid adieu to our experiences in Lebanon. Back we journey to the Port of Memory, where we take leave of our *Magic Carpet*.



FEATURES

January-ites

At governing students he's a true past-master;
At his ready smile all (feminine) hearts beat faster.
-dd- H-m-lt-n

A Dr. in front of her name she would see;
A more jovial girl there never could be.
P-rt- Cl-rk

Saucer eyes and button nose,
A distinctive style from head to toes.
M-rg-r-t B-ll-rd

His intellectual ability craves much attention;
His other talents are too numerous to mention.
B-ll C-mpb-ll

His trombone playing ranks with the best,
And his subtle humor stands any test.
D-ck B-rnd

His role of Ned was considered swell,
But in dancing and golfing you'll find he excels.
B-ll Kr-m-r

Her dancing technique is second to none;
You won't disagree when you see how it's done.
B-v-ry T-ll-tt

When for someone sweet you have a yen,
She's found with Mr. Gilbert in three 'ten.
B-rb-r B-nd-r

If you've been around, you've oft heard our brags
Of this sweetest of P. G.'s who dances and shags.
Fr-ne-s J-yc-

His dancing brought him fame;
He always used his middle name.
St-v- M-ss-ck

When for assembly we need a song
This lively musician came swinging along.
J-n-t G-l-s

This handsome blonde you know was grand;
He tooted in the football band.
Fr-nk B--tt-

A jitterbug of the first degree;
His shagging's something you ought to see.
B-b W-b-r

He plays his trombone with unequaled zest—
All gaits swing to his music, the best.
H-r-ld V-tt-

If the game looked dark and Lebanonites blue,
They'd count on him to take it through.
W-rr-n B-rnh-rd

Vogue come to life in every detail,
Her fashions soar to the top of the scale.
M-ry H-rd-st-r

Lessons from Krupa you'll think he's had
When you hear the rhythm of this little lad.
-l H-rr-s

When she learns more than she knows now,
She will be teaching her pupils how.
B-tty R-n-y

A little Dutch boy, and a little Dutch tasket,
A little Dutch biscuit in his little Dutch basket.
J-ck D-dt

She's quiet and shy, but oh so nice;
A good friend to have at any price.
D-t P-w-ll

Voted the prettiest girl in her class.
Who is this charming little lass?
H-l-n S-mm-r

A football hero, a scholar as well;
His middle name he refuses to tell.
H-p L-ngst-fl

Her studies brought her fame;
Our classplay program bore her name.
S-pt- S-nd-rs-n

He's lived across the sea;
Actor, musician—none better have we.
K-rt M--schk-

She sat behind the curtain
And made the classplay lines more certain.
L--s- W-ld

He was a friend of Eleene's;
And helped out with the "Ways and Means."
B-ll Cr-nst-n

She's nice and bright this little lass;
She ranked the fourth in all our class.
M-ry C-mpb-ll

This lad who is just grand,
Has played the tuba in our band.
St-v- R-c-

On typewriters she races,
And helped "make up" our actors' faces.
Gr-c- C-mpb-ll

Our Fritz was lots of fun;
When you wanted a laugh, he was the one.
Fr-d L-ng

He used to play in the band
And with home room programs lent a hand.
Fr-nk -lk

He's really gay and lots of fun;
He's soda jerker number one.
G--rg- Schr-b-r

Our Girl Reserves she guided,
And over *Twelve A two* presided.
-dd- J-hnst-n

A drum he loved to beat,
And helped make "Holiday" a treat.
Ch-ck H-ffm-n

His horn he loved to blow,
And liked with Eleanor to go.
Cr-s B--r

He helped to make our Lantern bright,
And melodramas loved to write.
J-hn G-lthw--t

Both her names begin with A;
She's famous in the G.A.A.
-nn- -g-nst--n

We like her, so do you.
She's quiet, bright, and charming too.
D-r-thy V-g-l-r

For salesman, clown, or jovial friend,
Here's the one we'd recommend.
B-b P-pp

You know for sure that she is sweet;
She's very clever and petite.
J-n- Schl--gh

Although she is quite new,
We're sure you like her, too.
P-ts- Sl--n-

He was clever in every way,
And handled the "business" of our classplay.
Ch-rl-s L-ss

He drove a great big car
And helped our Hi-Y to go far.
D-n H-lf

She hit many a ball, made many a basket.
What is her name? Why! . . . need you ask it?
H-l-n Sp-rk-

D-r-s D-sn-y
M-ry -chs-nh-rt

Who's Who



1. Best Dancers
Shirley Hutchison
Glenn Heck
"Must You Dance?"

2. Most Likely to Succeed
Dot Kaessner
Ted Burtis
"Franklin D. Roosevelt Jones"

3. Most Talented
Mary Lou Findley
Carl Betz
"You Ought To Be In Pictures"

4. Best Dressed
Caroline Blair
Bob Quigg
"Easy on the Eyes"

5. Best Looking
Kay Haughton
Bill McMinn
"I Only Have Eyes For You"

6. Best Personality
Ellen Campbell
Romaine (Lefty) Andrews
"You Too Can Be the Life of the Party"

7. Quietest
Esther Burns
Jim McGovern
"In My Solitude"

8. Wittiest
Sue Powell
Don Koontz
"I Get a Kick Out of You"

9. Best Natured
Mary Alice Dee
Roy De Longa
"The Joy of Living"

10. Peppiest
Marjorie Hall
Lou Shaw
"Stand Up and Cheer"

11. Best All-Around Athlete
Anne Charters
Warren Vieth
"You've Got to Be a Football Hero" to get around with
"Sweet Varsity Sue"

June-ites

Last Will and Testament

We, the June graduating class of 1939, in our usual state of sanity, wish to leave to the remainder of the student body these bequests. (Although these articles were useful to us during our stay here, we have found that "You can't take them with you". It's illegal.)

To the Freshmen—Dignity
To the Sophomores—Knowledge
To the Juniors—A list of snap courses
To the Faculty—Peace

"Pokey" Campbell leaves her gym suit to the mice.
Janice Cooper and Glenn Heck leave together.
"Wop" Duchene leaves his basketball points to Tom Hooper.
"Butch" Rearick and Jeanette Myers leave their finger nails to the Chinese mandarin.
Jack Shields leaves his fouls (basketball and otherwise) to the Basketball Team.
Betty Beam leaves her perfect attendance record to Dotty Greiner.
Bud McGlaughlin leaves his color combinations to any other stand-in for a rainbow.
(Perhaps the Murphy twins.)
Ginny Raeder leaves her appetite to anyone else lucky enough to be thin.
Don Koontz leaves his Shakespeare puns to Irene Maloney.
Sally Gehrett leaves her Traffic Post.
Dave Boyd leaves his grin (Cheshire variety) to Chuck Parnell.
"Cookie" leaves her gum under the chairs.
"Peanuts" Morgan leaves a trail of broken fenders.
Vieth leaves his all-around athletic ability and everything else to Ann Simpson.
Jack Manheimer leaves the Mt. Lebanon Juniors with regret.
Ken DeJohn, Bill Lloyd, "Deac" Gardiner, and the others leave the Ranger traditions.
(.000 League standing.)
Dick McNally leaves his "shyness" for the good of the school.
Lois Stuckeman, Alice McMaster, and Jean Wyre leave the G.A.A. sorrowfully.
George Churchill and Eileen McGinnis leave more room for us ignorant ones on the Honor Roll.
Bill Weimer leaves to get some sleep.
Cy Donoghue leaves his foils (fencing) to Bob Charters.
Bruce Gardner and Homer Amick leave (day dreaming).
Jean Swartz leaves her patience (prompter in the class play) to the faculty.
Lois Lichtenthaler leaves her arching ability to Cupid.
Emily Delach leaves her unanswerable questions to Professor Quiz.
Guy Peterson and Bert Brooks leave their all-around athletic ability—in track.
Vergie Fisher, Mary Jane Mutz, Bette Sutton, and Betty Senior leave their pep to the Traffic Squad.
Charlie Becraft leaves his officiousness to 116.
Dot Gaites, Pat Colgate, and Johnny Hurford leave their brains to the biology class.
Betty (John Henry) Erenrich leaves her water-gun to Mr. Brown.
Juna Eva leaves her friendliness to Mr. Saxton.
Jeanne Ivory leaves her information.
Bill Kane, Gene Roberts, Jane Wheeler, and Harry Wilson just leave.
"Bev-L" Lewis leaves his vice-presidency with his efforts towards good programs.
Pat Denhart and Mary Lou Volmrich leave their hair ribbons to the 7B's.
Bob Klippel leaves his fiddle to Nero.
Betty Goehring leaves her green clothes to Ireland.
Ruth Barker leaves her "reform" program to the school.
Eleanor Schwager leaves her sarcasm to the Log.
Anita McQuillen leaves her soft voice to Margaret Osbourne.
Manus Scott leaves his "savoir fairishness" to Stan Shepherd.
Frances Dotten leaves her long hair to Romeo.
Marie Wetzel leaves her piano. (She can't take it with her.)
Bob Whitelock leaves chasing us. We couldn't find anything for him to leave.
Bill Cross and Marty Lose leave hastily. They had to. They wrote this.

Remember----

When Ted Burtis arrived, trailing behind his New York accent?
Anne Charters hitting a new high in rapid-fire talking?
When Mary Alice Dee played "Little Mary" in the class play?
Sadie Capone's dress doing a "sliding act" as she was reciting in class?
When some people thought Helen Johns meant chickens when she called, "Here, Chick, Chick, Chick"?
How well that Betz lad could draw besides being the classes' Barrymore?
Toni Loughborough's lively "Hi Ya"?
Frank Fitch blushing when the piece "Junior" came out?
Mr. Gilbert heckling Annetta Degelman about smoking cornsilk?
Janet Augenstein locking Miss Kekilty's keys in a room?
Lucille Mohl spilling Gardenia perfume on Don Ramsey?
How the old piano keyboard would shake when that Kough girl started pounding?
When Tess Nolte handed Mr. Laderer the rubber doughnut?
How Jack O'Brien "chimed" out when "Normandy" time came?
Margie Weatherwax being locked in the Art room 4bc to work on the *Log* drawings?
Ruth Fisher leaving us "along the road" in foreign language classes?
Fay Purpura coming out a nickel short when selling lunch checks?
Grace Tilly's movie stub collection?
Louise Rider translating those "Round the World" letters?
How Casanova Quigg swept the pretty lasses off their feet?
Jack Walsh's love of English 7?
Barbara Devore's car getting repaired all the time?
Margie Hall, the cheerleader with the B. O. A. (Box Office Appeal)?
Jim Hooker? When we saw him, we saw Anne.
Carolyn Lunsford using her Southern accent to get a part in "Stage Door"?
Mary Jane Mayleben laying down the law on Traffic Squad?
Ramona Moore without "Vit"?
Willis Nolle receiving "out of order" slips?
Marie Reiter witnessing many hall-walkers while typing outside of 311?
Paul Shanor learning the technique of a certain cheerleader?
Lois Woodburn going with Dick?
Bill Abriatis waiting outside of 116 at the beginning of C period?
Joan Adams, the reason Bill Falk came back for a P. G. course?
Mary Helen Anderson's interest in her studies? Maybe Rennie is her tutor.
"Lefty" Andrews going places on the basketball floor as well as with Ellen?
"Bogie" Bergman as a feature attraction at the Denis?
Janet Collins' first fall on roller skates?
Natalie Cole and Ed Dapper hitting the "jack pot" at Bank Night?
Bill McRoberts and Henry Renton who could be classed as "small 'uns and shy 'uns"?
The pile of handkerchiefs that Dick Ritter collected?
The day opening with a radio skit—courtesy of Sue Powell?
Lois Close telling the class what a beautiful tree grape nuts grew on?
That Baker girl's dimples?
When Margaret Hofrichter couldn't quite explain how she became a home room secretary?
Beryle Vincent's idea of what the well-dressed woman should wear? (Her sister's clothes.)
The day Esther Harrison washed and washed her hands?
How the ticket sales boomed when Bill Gottschalk took over?
When Jack Southworth defined the "Spoils" system in Economics class?
When Anne Curl doused her hair with oil and "couldn't do a thing with it"?
Bill Schweitzer wrecking his father's car, the day he got his learner's permit?

DORIS CONE,

HARRIET ROHRKASTE.

Believe It or Not:

Ed Allee spends his spare time raising pigeons.
We still remember Marge Kelley's first day in school (raccoon coat, etc.)
Two inseparable companions are Bob McCready and a chess board.
The queerest combination around is "Bunny" (Mary Lane Pletcher) who collects fish.
"A girl in every port" will be Joe Donahoe's motto.
'Tis rumored that Kay Haughton is a face contortionist.
"Squirrel Hess" has a yearning to become a dentist someday; nice pulling?
Betty Hosick's theme song is "the Old Gray Cheve Still Goes—Regardless Wear".
Bill McMinn combines "sex appeal" and "sax appeal".
Your guiding light at the Alvin may be John McGrath.
"Benny" Dyson, No. 1 jitterbug, really gets in the groove and jives it out.
Eleanor Lohnes still sings "There's Something About a Trumpet".
Elsie Tener's thoughts still wander back to Perry High.
Bob Hance not only takes the spotlight in photography, but also in fencing.
Howard Alderson, track enthusiast, harbors secret aspirations concerning the forthcoming Olympics.
Wilma Fleet is one reason why the chewing gum business booms.
Betty Jane Dietrich is a second Babe Didrickson.
"What *Price* glories" in his proud guarding of our school colors.
"Bus" Elliott is a kin of that cat with nine lives when the motor's purring.
Dick Wolf is an up and coming C.P.A.
"Sec" Ann Yankosky is well on her way to "secretarialism".
The owner of the infectious laugh echoing through the halls is "Marg" McGaw.
Eugene Grosso, alias "Mouse", plays tackle for the Shamrock Football Team.
Kathleen Urben finally confessed—she likes best to sing.
Mary Meyer and Dot Reinhard beat it out on the clarinet and piano respectively.
The diplomatic service holds the interest of Jack Bowlus.
Stepin' Fetchit and Charles Smith are brothers under the skin.
Ed Sherry is quite "licky" on the subject of stamp collecting.
Nina Drake will look into the saying, "The way to a man's heart. . . ."
Tarzan Weismuller has nothing on that McCall man.
"Peanuts, popcorn, crackerjack" is the cry of Henry Hepner.
Ginny Werner is the girl who likes to visit "her" dentist.
Chuck O'Brien's handwriting would make John Hancock green with envy.
Dame Hesse craves being either a glass blower or an archeologist.
"There's something about a soldier," so to the Citadel goes Lee Ferrell.
Olive May Holtz rates some credit for the social committee's unique ideas.
Jeanne Linn wins the title "All American Girl Athlete".
Things will explode some day when "Wojo" Benson dives into the field of chemicals.
That pretty miss who does nicely in the drawing way is our Ginnie Clark.
Mr. Charles Graham states, "I eat, sleep and breathe baseball." What a life!
Louise Nichol has more activities than this writer can count.
Bill Oxenreiter gets a big kick out of artistic doodlings.
A tie pin soon replaced Virginia Rhyner's class ring. (Elementary.)
That good looking lad with dimples is our own "Dentist's Delight", Paul Peters.
Esther Sapple spends her spare time two-stepping at Sports-Haven Roller Rink.
Jim Springer's finally getting down to earth; a geologist he would be.
In the future girls, your love letters may be delivered by postman George Simmons.

MARY ANN HUNTER,

SHIRLEY HUTCHISON.

Goodbye Forever----

To complaining about "that same old stuff" in the cafeteria, then tearing pell-mell down three flights of stairs, skidding around a corner on one heel, bumping into a teacher with an armload of books, gasping an apology, fighting for a place in line, grabbing a tray, and eating five checks' worth of food.

To making a mad dash for a rapidly closing homeroom door at 8:39:59 A.M.

To going to basketball games, sitting behind a sweet young thing, and forgetting the score.

To study halls, and wondering why they were called that.

To those bull sessions at the ends of the halls, at the lunch tables, and in the back of study halls.

To borrowing homework.

To strolling aimlessly through the halls, looking in classrooms, but keeping one eye on the clock, and the other out for a teacher.

To buying a *Lantern* to see if your name's in *Devilette*.

To making the Alarm Clock program the daily eye opener.

To wondering why "P.G.'s" "P.G."

To wondering who is attached to the hand that slips through the door and collects attendance cards.

Joe Donahoe.

Ten Minutes in the Dead-Letter Office or What the Postman Doesn't Deliver Won't Hurt You

Ten years from now these letters will be found in the dead-letter office of the post office in one of our large cities.

D. L. Creed, President
Creed Chemical Corporation
Creedville, Pennsylvania

Dear Mr. Creed,

Your wonderful new chemical product known as Creed's Chemi-Corn Cure has done wonders for me. Until three days ago I was troubled greatly by corns on my toes. However, two applications of your marvelous remedy and my corns disappeared. I anticipate no more trouble as my toes disappeared also. You may feel free to use this testimonial at any time.

Yours thankfully,

J. J. McGIRK

Robert McCready
Mt. Lebanon, Pennsylvania
Dear Mac,

QB to K4

Yours,

E. FAY

P.S. This chess game has been carried on by mail for five years. Let's quit and try correspondence Tiddley Winks.

E.F.

Ode To Our Junior High

To the mem'ry of our little friends
Who leave our midst this fall,
We dedicate this homely rhyme,
To say we'll miss them all.
We'll miss the dainty patter
Of their nimble, dancing feet;
We'll miss their loving little shoves,
Their darling kicks, so sweet.
And everytime we tread the stairs
Molested not and free,
To think that we are walking down,
Not falling down, you see,
We'll think of them, the little dears,
As tears bedim our eyes.
We're wond'ring how such bother came
From babies of their size.

Backfire To Our Senior High

You said your rhyme was homely, friends;
We'll say that it was worse;
A monument's what we deserve—
Not just a little verse.
For all the suff'ring we've endured
These long, long-seeming years—
Your bumps, and boots, and batting,
Your taunting, snick'ring sneers.
You've acted high and mighty like
A bunch of feudal lords,
But this fall we'll all do the laughing
As we see you wash the boards.
We'll miss your arm-in-arm affairs
That daily strut the halls;
We'll miss your handsome Gables
And your painted cutie dolls;
Why, certainly, we'll miss you all,
No matter where we roam.
Without your mooning, moaning
We'll never feel at home.
But in spite of this, you'll see us,
When our day of torture ends,
Leave this building in a hurry—
"So, adieu, fine feathered friends."

ETHEL LORENZ

Autographs



Autographs



